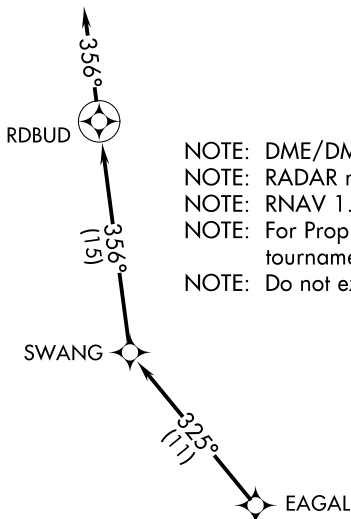


RDBUD THREE DEPARTURE (RNAV)

AUGUSTA DEP CON★
119.15 284.625
CLNC DEL 126.075
CTAF
122.8

**TOP ALTITUDE:
ASSIGNED BY ATC**



- NOTE: DME/DME/IRU or GPS required.
- NOTE: RADAR required.
- NOTE: RNAV 1.
- NOTE: For Prop aircraft only during Masters golf tournament week.
- NOTE: Do not exceed 250K until advised by ATC.

TAKEOFF MINIMUMS

Rwy 7, 19, 25: Standard.

Rwy 1: 200-1¼ or standard with minimum climb of 220' per NM to 800, or alternatively, with standard takeoff minimums and a normal 200' per NM climb gradient, takeoff must occur no later than 1400' from to DER.

NOTE: Chart not to scale



DEPARTURE ROUTE DESCRIPTION

TAKEOFF RWY 1, 7, 19, 25: Climb heading assigned by ATC for vectors to EAGAL, then on depicted route to RDBUD, then on heading 356° for RADAR vectors. Thence...

...maintain altitude assigned by ATC. Expect clearance to filed altitude/flight level within 10 minutes after departure.