

WAAS CH 90301 W07A	APP CRS 066°	Rwy Idg TDZE Apt Elev	5500 515 529
----------------------------------------	------------------------	-----------------------------	-----------------------------------------

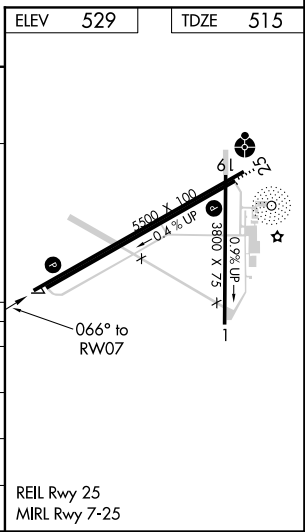
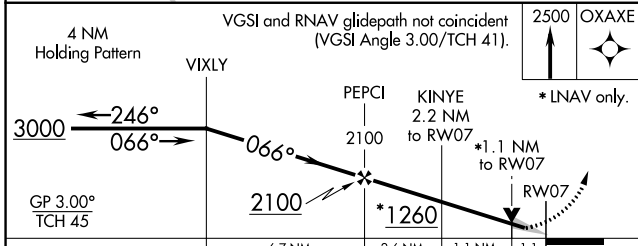
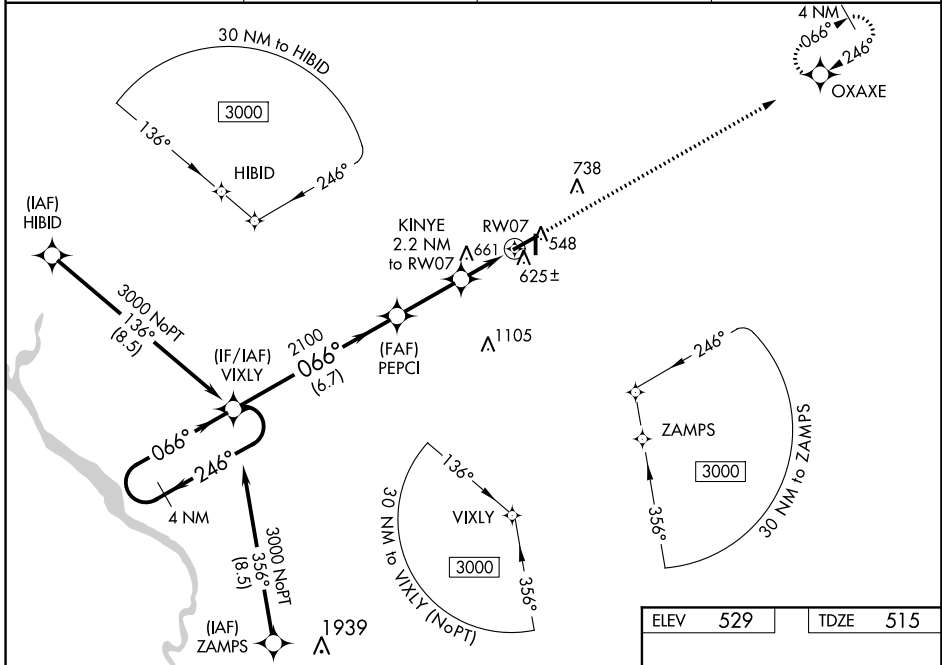
RNAV (GPS) RWY 7

AIKEN RGNL (AIK)

⚠ Baro-VNAV NA when using Augusta Rgnl at Bush Field altimeter setting. For uncompensated Baro-VNAV systems, LNAV/VNAV NA below -16°C (4°F) or above 40°C (104°F). DME/DME RNP-0.3 NA. VDP NA with Augusta Rgnl at Bush Field altimeter setting. When local altimeter setting not received, use Augusta Rgnl at Bush Field altimeter setting: increase LPV all Cats DA to 819 feet, LNAV/VNAV all Cats DA to 890 feet, LPV all Cats visibility ¼ mile and LNAV/VNAV all Cats ⅓ mile; increase all MDA 120 feet and LNAV Cat C/D visibility ⅓ mile and Circling Cat D ¼ mile.

MISSED APPROACH: Climb to 2500 direct OXAXE and hold.

AWOS-3 118.025	AUGUSTA APP CON * 119.15 284.625	CLNC DEL 126.075	UNICOM 122.8 (CTAF)
--------------------------	--------------------------------------------	----------------------------	-------------------------------



CATEGORY	A	B	C	D
LPV DA		715-¾	200 (200-¾)	
LNAV/VNAV DA		786-⅞	271 (300-⅞)	
LNAV MDA	920-1	405 (400-1)	920-1½	405 (400-1½)
CIRCLING	980-1 451 (500-1)	1000-1 471 (500-1)	1000-1½ 471 (500-1½)	1080-2 551 (600-2)

SE-2, 03 JAN 2019 to 31 JAN 2019

SE-2, 03 JAN 2019 to 31 JAN 2019