

# KAOLN FIVE DEPARTURE (RNAV)

AIKEN RGNL (AIK)  
AIKEN, SOUTH CAROLINA

SE-2, 03 JAN 2019 to 31 JAN 2019

AUGUSTA DEP CON ★  
119.15 284.625  
CLNC DEL 126.075  
CTAF  
122.8

### TAKEOFF MINIMUMS

Rwy 7, 19, 25: Standard.

Rwy 1: 200-1/4 or standard with a minimum climb of 220' per NM to 800, or alternatively, with standard takeoff minimums and a normal 200' per NM climb gradient, takeoff must occur no later than 1400' prior to DER.

NOTE: DME/DME/IRU or GPS required.

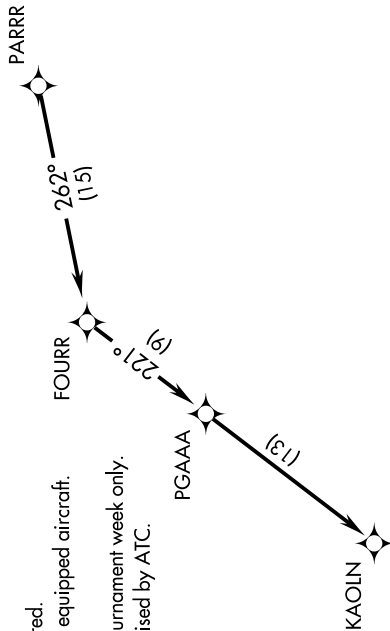
NOTE: RADAR required for non-GPS equipped aircraft.

NOTE: RNAV 1.

NOTE: For use during Masters golf tournament week only.

NOTE: Do not exceed 250K until advised by ATC.

**TOP ALTITUDE:  
ASSIGNED BY ATC**



NOTE: Chart not to scale.

### DEPARTURE ROUTE DESCRIPTION

TAKEOFF RWY 1, 7, 19, 25: Climb on assigned heading for RADAR vectors to PARRR, then on depicted route to KAOLN, thence. . . .

. . . maintain altitude assigned by ATC. Expect clearance to filed altitude/flight level within 10 minutes after departure.

# KAOLN FIVE DEPARTURE (RNAV)

SE-2, 03 JAN 2019 to 31 JAN 2019