

# JUNPR FOUR DEPARTURE (RNAV)

AUGUSTA DEP CON★  
119.15 284.625  
CLNC DEL 126.075  
CTAF  
122.8

**TOP ALTITUDE:  
ASSIGNED BY ATC**

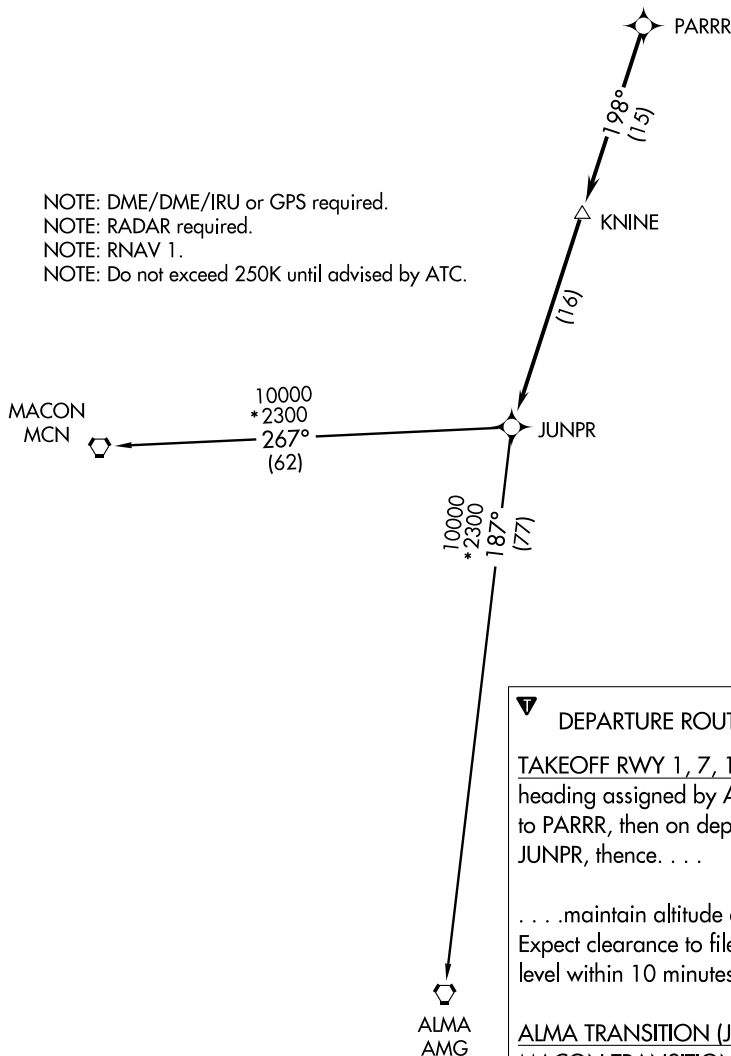


### TAKEOFF MINIMUMS

Rwy 7, 19, 25: Standard.

Rwy 1: 200-1¼ or standard with a minimum climb of 220' per NM to 800, or alternatively, with standard takeoff minimums and a normal 200' per NM climb gradient, takeoff must occur no later than 1400' prior to DER.

- NOTE: DME/DME/IRU or GPS required.
- NOTE: RADAR required.
- NOTE: RNAV 1.
- NOTE: Do not exceed 250K until advised by ATC.



**▼ DEPARTURE ROUTE DESCRIPTION**

TAKEOFF RWY 1, 7, 19, 25: Climb heading assigned by ATC for vectors to PARRR, then on depicted route to JUNPR, thence. . . .

. . . maintain altitude assigned by ATC. Expect clearance to filed altitude/flight level within 10 minutes after departure.

ALMA TRANSITION (JUNPR4.AMG)  
MAON TRANSITION (JUNPR4.MCN)

NOTE: Chart not to scale.

SE-2. 03 JAN 2019 to 31 JAN 2019

SE-2. 03 JAN 2019 to 31 JAN 2019