

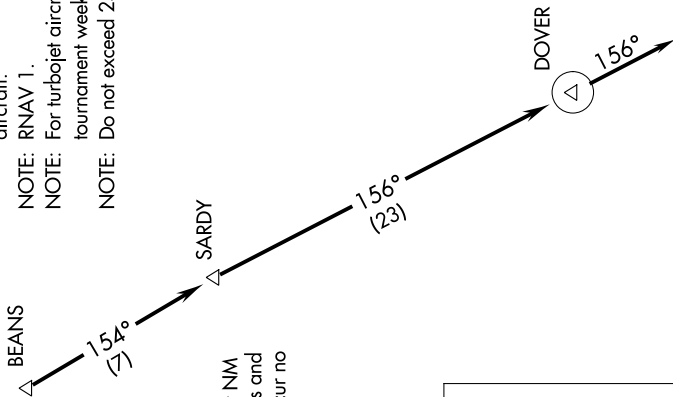
DOVER FOUR DEPARTURE (RNAV)

SE-2, 03 JAN 2019 to 31 JAN 2019

AUGUSTA DEP CON ★
119.15 284.625
CLNC DEL 126.075
CTAF
122.8

**TOP ALTITUDE:
ASSIGNED BY ATC**

- NOTE: DME/DME/IRU or GPS required.
- NOTE: RADAR required for non-GPS equipped aircraft.
- NOTE: RNAV 1.
- NOTE: For turbojet aircraft during Masters golf tournament week.
- NOTE: Do not exceed 250K until advised by ATC.



TAKEOFF MINIMUMS

Rwy 7, 19, 25: Standard.
 Rwy 1: 200-1/4 or standard with a minimum climb of 220' per NM to 800, or alternatively, with standard takeoff minimums and a normal 200' per NM climb gradient, takeoff must occur no later than 1400' prior to DER.

DEPARTURE ROUTE DESCRIPTION

TAKEOFF RWY 1, 7, 19, 25: Climb heading assigned by ATC for vectors to BEANS, then on depicted route to DOVER, then on heading 156° for RADAR vectors, thence. . . .
 . . . maintain altitude assigned by ATC. Expect clearance to filed altitude/flight level within 10 minutes after departure.

NOTE: Chart not to scale.

DOVER FOUR DEPARTURE (RNAV)

SE-2, 03 JAN 2019 to 31 JAN 2019