

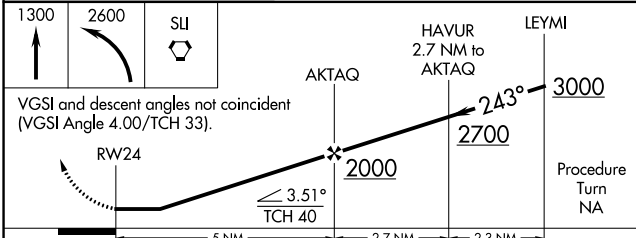
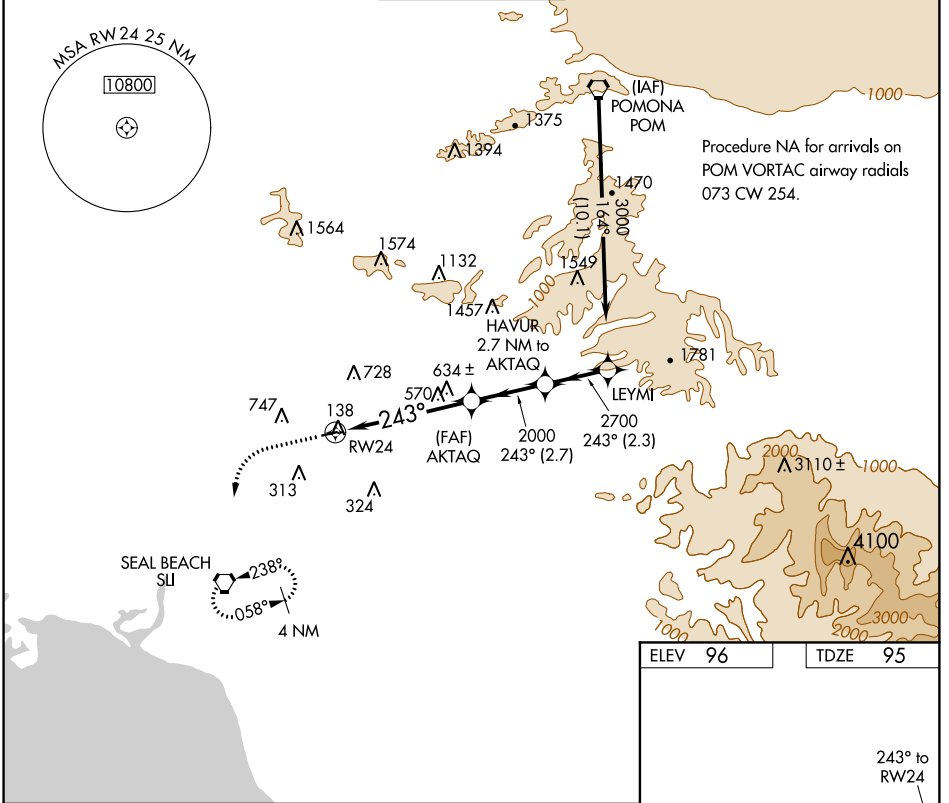
APP CRS 243°	Rwy Idg 2868
	TDZE 95
	Apt Elev 96

RNAV (GPS) RWY 24

FULLERTON MUNI (F'UL)

<p>▽ Inoperative table does not apply.</p> <p>△ NA DME/DME RNP-0.3 NA. Night landing: Rwy 6 NA Helicopter visibility reduction below 1 SM NA.</p>	<p>MALSR</p>	<p>MISSED APPROACH: Climb to 1300, then climbing left turn to 2600 direct SLI VORTAC and hold.</p>
---	---------------------	---

<p>ATIS 125.05</p>	<p>SOCAL APP CON 125.35 316.125</p>	<p>FULLERTON TOWER* 119.1 (CTAF) </p>	<p>GND CON 121.8</p>	<p>UNICOM 122.95</p>
--------------------------------------	---	---	--	--



ELEV 96	TDZE 95
---------	---------

Procedure Turn NA

MIRL Rwy 6-24

REIL Rws 6 and 24

CATEGORY	A	B	C	D
LNAV MDA	900-1 805 (900-1)	900-1¼ 805 (900-1¼)		NA
CIRCLING	900-1 804 (900-1)	900-1¼ 804 (900-1¼)		NA

SW-3, 03 JAN 2019 to 31 JAN 2019

SW-3, 03 JAN 2019 to 31 JAN 2019