

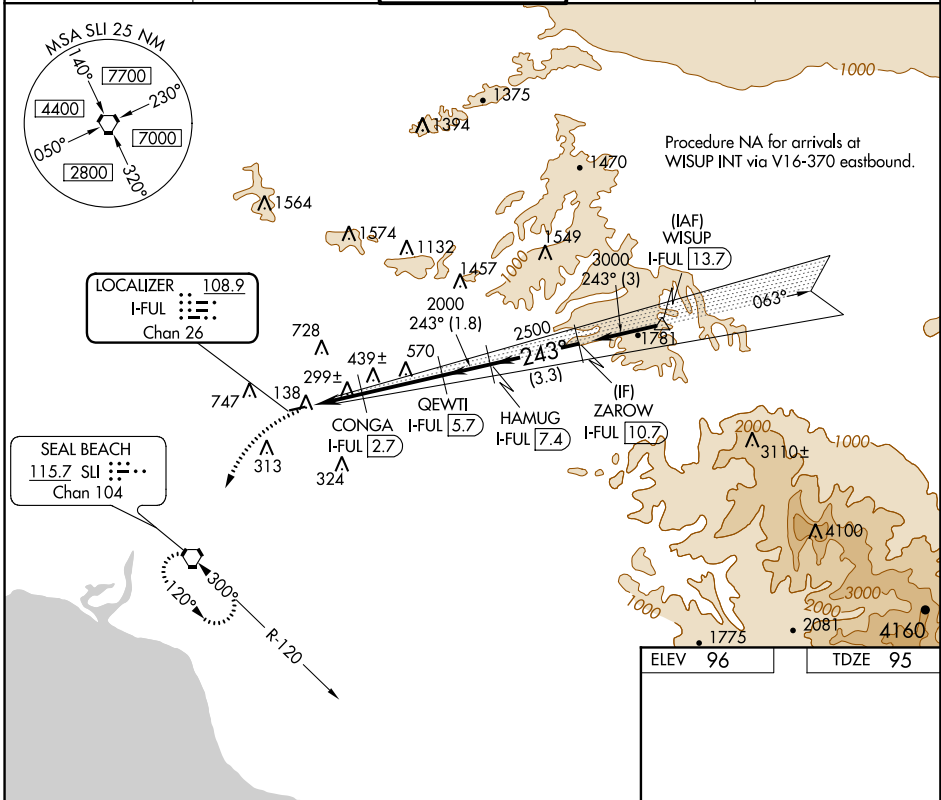
LOC/DME I-FUL 108.9 Chan 26	APP CRS 243°	Rwy Idg 2868 TDZE 95 Apt Elev 96
---	------------------------	---

LOC/DME RWY 24

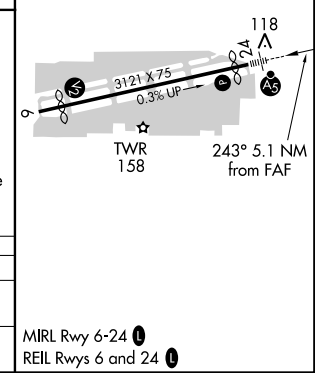
FULLERTON MUNI (F'UL)

<p>▽ Inoperative table does not apply. ▲ Night landing: Rwy 6 NA. Helicopter visibility reduction below 1 SM NA.</p>	<p>MALSR</p>	<p>MISSED APPROACH: Climbing left turn to 2600 direct SU VORTAC and hold.</p>
--	--------------	---

<p>ATIS 125.05</p>	<p>SOCAL APP CON 125.35 316.125</p>	<p>FULLERTON TOWER★ 119.1 (CTAF) </p>	<p>GND CON 121.8</p>	<p>UNICOM 122.95</p>
-------------------------------	--	--	---------------------------------	---------------------------------



<p>2600</p> <p>SLI </p> <p>VGSI and descent angles not coincident (VGSI Angle 4.00/TCH 33).</p>	<p>ZAROW I-FUL 10.7</p>		<p>Procedure Turn NA</p>	
	<p>CONGA I-FUL 2.7</p> <p>QEWTI I-FUL 5.7</p> <p>HAMUG I-FUL 7.4</p>	<p>3000</p>		
<p>I-FUL 0.5</p>	<p>920</p> <p>2000</p> <p>2500</p>	<p>243°</p>	<p>3.3 NM</p>	
<p>2.2 NM</p>	<p>2.9 NM</p>	<p>1.8 NM</p>	<p>3.3 NM</p>	
CATEGORY	A	B	C	D
S-24	560-1	465 (500-1)		NA
CIRCLING	760-1 664 (700-1)	840-1¼ 744 (800-1¼)		NA



SW-3, 03 JAN 2019 to 31 JAN 2019

SW-3, 03 JAN 2019 to 31 JAN 2019