

ANAHEIM ONE DEPARTURE

AL-5136 (FAA)

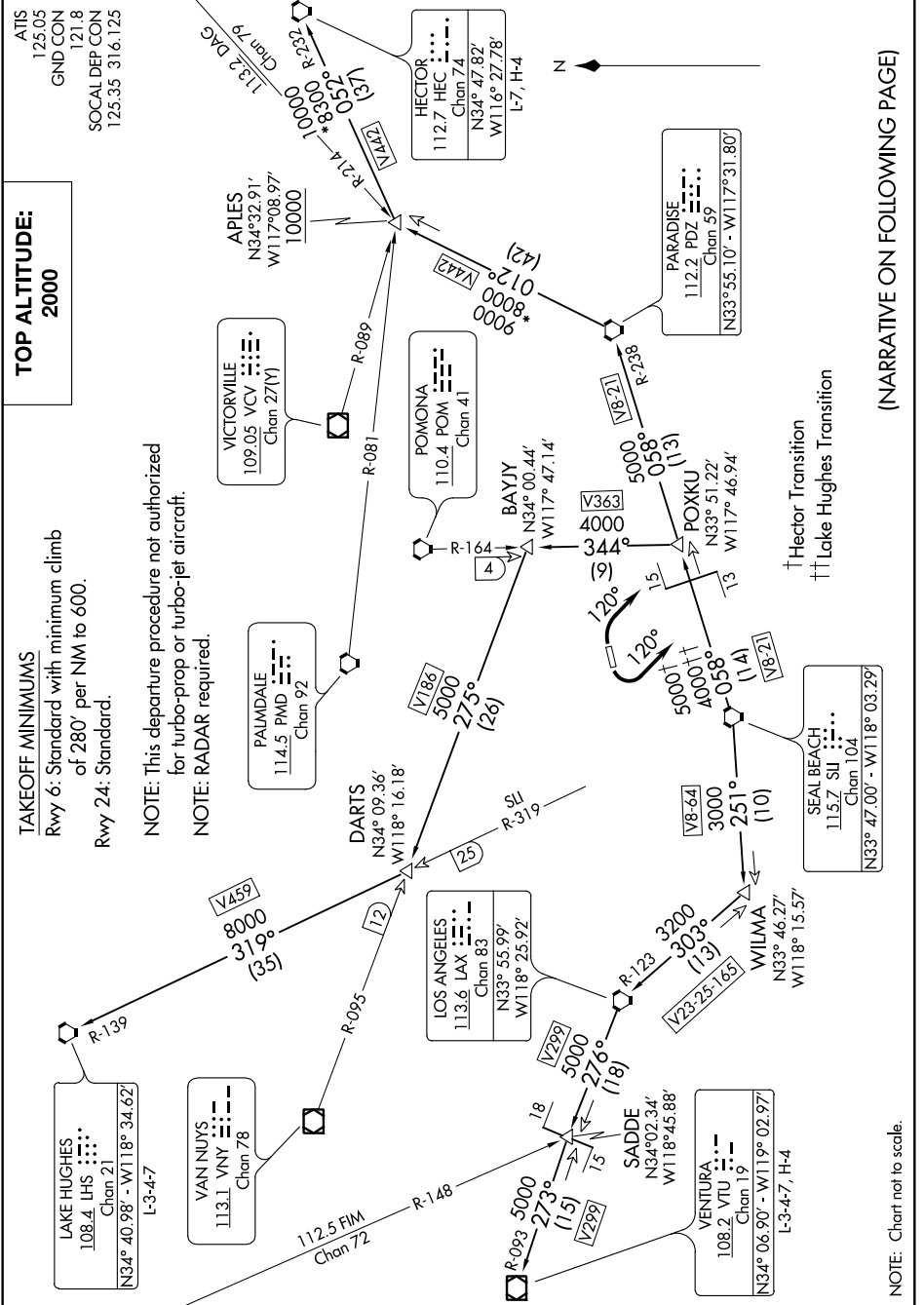
FULLERTON MUNI (FUL)
FULLERTON, CALIFORNIA

**TOP ALTITUDE:
2000**

TAKEOFF MINIMUMS

Rwy 6: Standard with minimum climb of 280' per NM to 600.
Rwy 24: Standard.

NOTE: This departure procedure not authorized for turbo-prop or turbo-jet aircraft.
NOTE: RADAR required.



(NARRATIVE ON FOLLOWING PAGE)

NOTE: Chart not to scale.

SW-3, 03 JAN 2019 to 31 JAN 2019

SW-3, 03 JAN 2019 to 31 JAN 2019

ANAHEIM ONE DEPARTURE

FULLERTON, CALIFORNIA
FULLERTON MUNI (FUL)