

VORTAC DNV 111.0 Chan 47	APP CRS 016°	Rwy Idg 6006 TDZE 674 Apt Elev 697
----------------------------------------------	------------------------	---------------------------------------------------------------

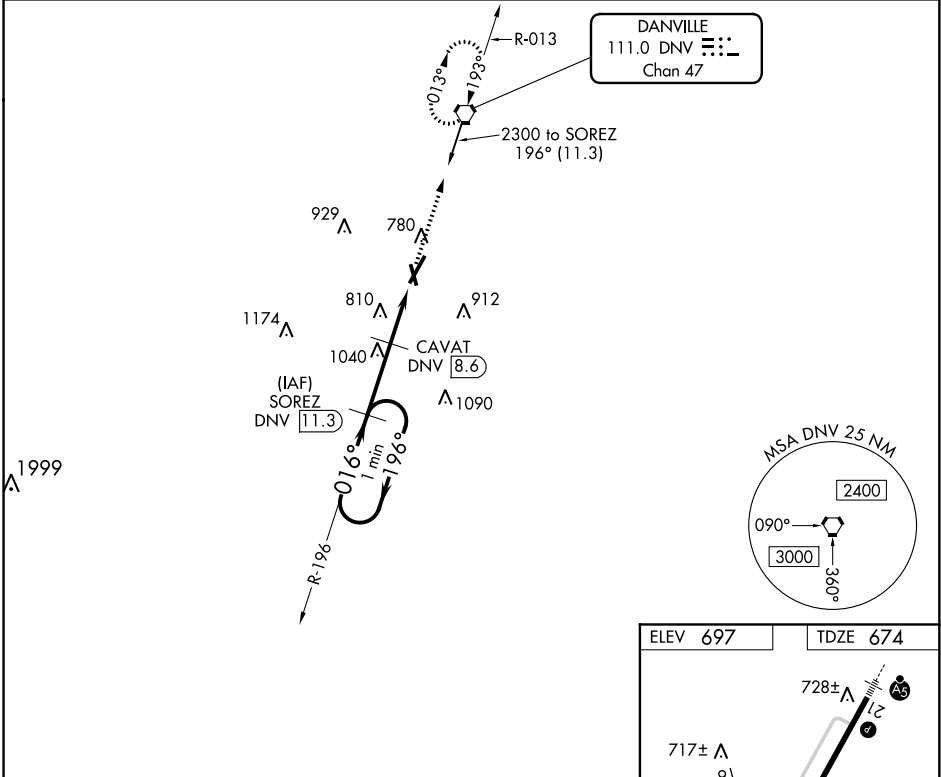
VOR/DME RWY 3

VERMILION RGNL (DNV)

⚠ If local altimeter setting not received, use University of Illinois-Willard altimeter setting and increase all MDAs 100 feet.
⚠ Helicopter visibility reduction below 3/4 SM NA.

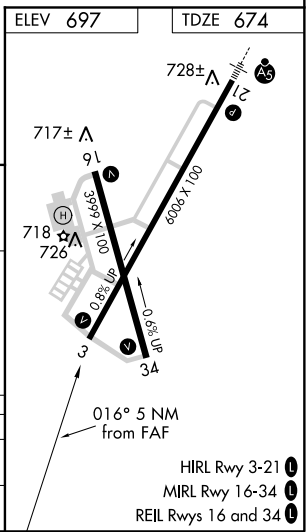
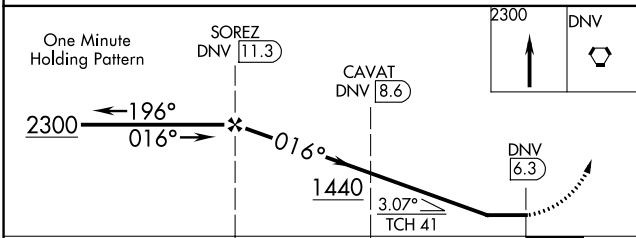
MISSED APPROACH: Climb to 2300 direct DNV VORTAC and hold.

AWOS-3 119.275	CHAMPAIGN APP CON ★ 121.35 285.65	CLNC DEL 121.7	UNICOM 122.7 (CTAF) 0
--------------------------	---------------------------------------------	--------------------------	---------------------------------



EC-3, 03 JAN 2019 to 31 JAN 2019

EC-3, 03 JAN 2019 to 31 JAN 2019



	SOREZ DNV 11.3		CAVAT DNV 8.6		2300	DNV
	2300 ← 196°		016° →		1440	DNV 6.3
	2.7 NM		2.3 NM		TCH 41	
CATEGORY	A	B	C	D		
S-3	1120-1	446 (500-1)	1120-1 1/4 446 (500-1 1/4)	1120-1 1/2 446 (500-1 1/2)		
CIRCLING	1160-1	463 (500-1)	1160-1 1/2 463 (500-1 1/2)	1260-2 563 (600-2)		

HIRL Rwy 3-21 0
MIRL Rwy 16-34 0
REIL Rws 16 and 34 0