

APP CRS <b>345°</b>	Rwy Idg TDZE Apt Elev	<b>3999</b> <b>667</b> <b>697</b>
------------------------	-----------------------------	---

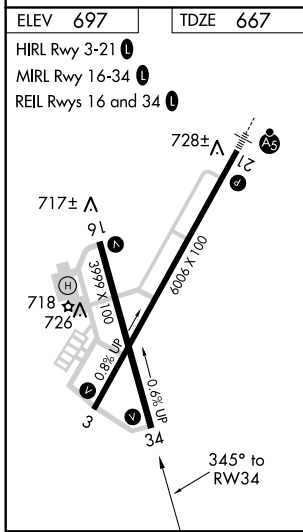
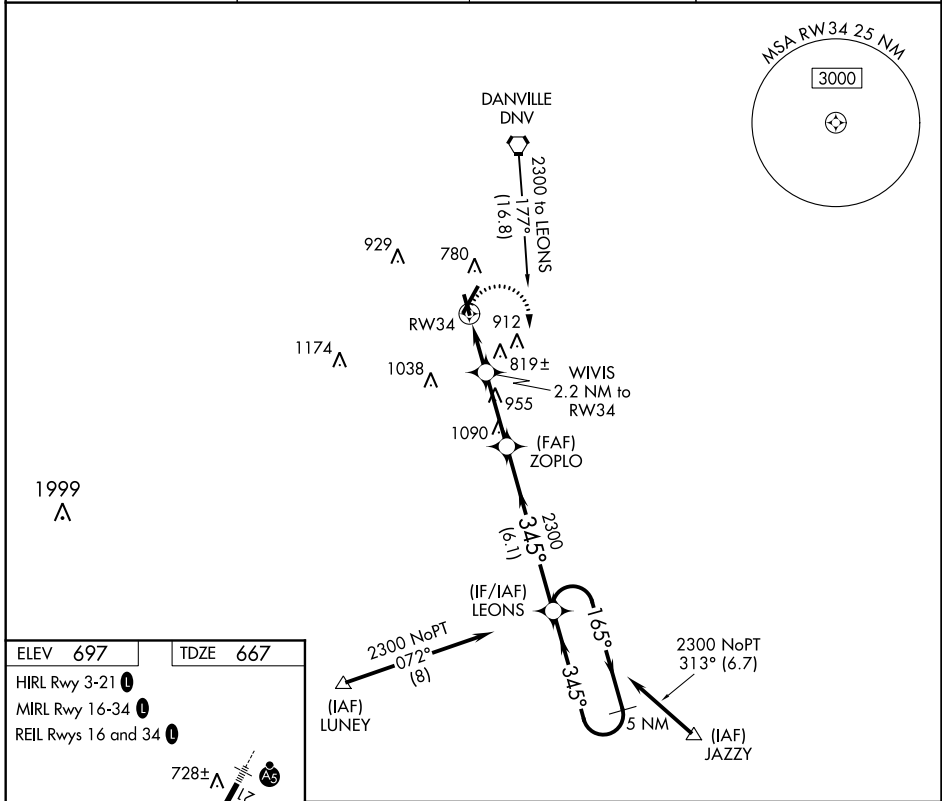
# RNAV (GPS) RWY 34

VERMILION RGNL (DNV)

**▼** If local altimeter setting not received, use University of Illinois-Willard altimeter setting and increase all MDAs 100 feet. DME/DME RNP-0.3 NA.  
**▲** Helicopter visibility reduction below ¾ SM NA.

MISSED APPROACH: Climbing right turn to 2300 direct LEONS and hold.

AWOS-3 <b>119.275</b>	CHAMPAIGN APP CON ★ <b>121.35 285.65</b>	CLNC DEL <b>121.7</b>	UNICOM <b>122.7 (CTAF)</b>
--------------------------	---	--------------------------	-------------------------------



2300 LEONS	VGSI and descent angles not coincident (VGSI Angle 3.00/TCH 14).			
WIVIS 2.2 NM to RW34	ZOPLO	LEONS	5 NM Holding Pattern	
1400	2300	2300	2300	
2.2 NM	2.8 NM	6.1 NM		
3.05° TCH 40	345°	165°	345°	
2300	2300	2300	2300	
CATEGORY	A	B	C	D
LNAV MDA	1080-1	413 (400-1)	1080-1½	413 (400-1½)
CIRCLING	1160-1	463 (500-1)	1160-1½	1260-2
			463 (500-1½)	563 (600-2)

EC-3, 03 JAN 2019 to 31 JAN 2019

EC-3, 03 JAN 2019 to 31 JAN 2019