

RNAV (GPS) RWY 3

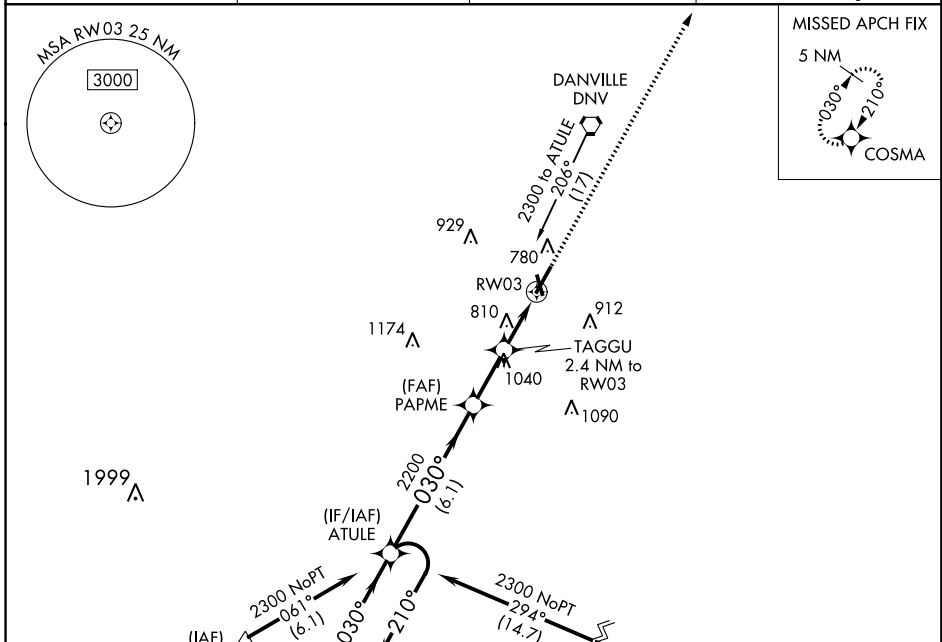
VERMILION RGNL (DNTV)

APP CRS	Rwy Idg	6006
030°	TDZE	674
	Apt Elev	697

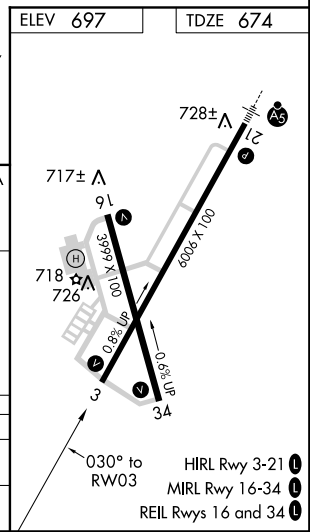
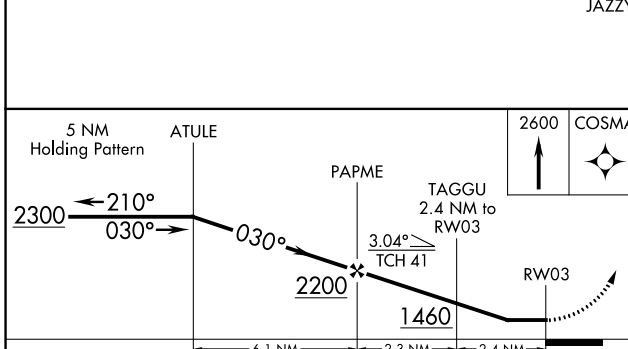
⚠ If local altimeter setting not received, use University of Illinois-Willard altimeter setting and increase all MDAs 100 feet. DME/DME RNP-0.3 NA. Helicopter visibility reduction below 3/4 SM NA.

MISSED APPROACH: Climb to 2600 direct COSMA and hold.

AWOS-3 119.275	CHAMPAIGN APP CON ★ 121.35 285.65	CLNC DEL 121.7	UNICOM 122.7 (CTAF) 0
--------------------------	---	--------------------------	--



ELEV 697	TDZE 674
----------	----------



CATEGORY	A	B	C	D
LNAV MDA	1120-1	446 (500-1)	1120-1½ 446 (500-1½)	1120-1½ 446 (500-1½)
CIRCLING	1160-1	463 (500-1)	1160-1½ 463 (500-1½)	1260-2 563 (600-2)

EC-3, 03 JAN 2019 to 31 JAN 2019

EC-3, 03 JAN 2019 to 31 JAN 2019