


WAAS CH 58004 W21A	APP CRS 210°	Rwy Idg 6006 TDZE 697 Apt Elev 697
--	------------------------	---


RNAV (GPS) RWY 21

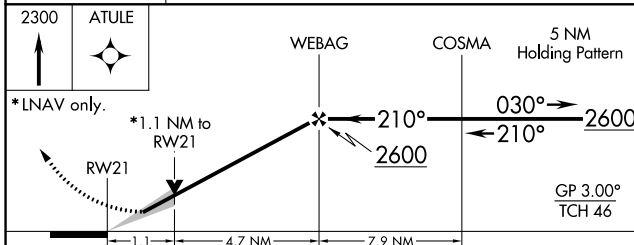
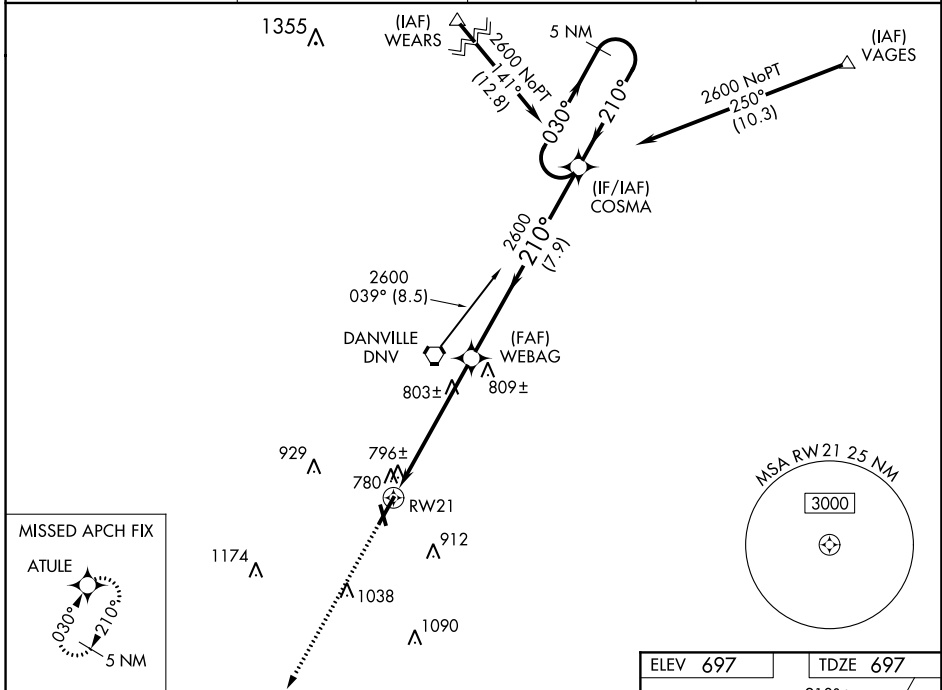
VERMILION RGNL (D.V)

⚠ If local altimeter setting not received, use University of Illinois-Willard altimeter setting and increase all DAs/MDAs 100 feet. Baro-VNAV and VDP NA when using University of Illinois-Willard altimeter setting. For uncompensated Baro-VNAV systems, LNAV/VNAV NA below -16°C (4°F) or above 47°C (116°F). For inop MALS, increase LPV all Cats visibility to 1 mile and LNAV Cat D visibility to 1½ mile. DME/DME RNP-0.3 NA.

MALS 

MISSED APPROACH: Climb to 2300 direct ATULE and hold.

AWOS-3 119.275	CHAMPAIGN APP CON ★ 121.35 285.65	CLNC DEL 121.7	UNICOM 122.7 (CTAF) 
--------------------------	---	--------------------------	---



ELEV 697	TDZE 697
----------	----------

This diagram shows the final approach and runway details. Key features include:

- Final Approach:** 2600 NoPT (7.9) at 210° heading, 5 NM from (IF/IAF) COSMA.
- Final Approach:** 2600 NoPT (8.5) at 039° heading, 5 NM from (FAF) WEBAG.
- Altitudes:** 728±, 717±, 91, 718, 726.
- Obstacles:** 717±, 91, 718, 726.
- Runway:** RWY 21, 0.08° UP, 0.08° UP.
- Other Runways:** HIRL Rwy 3-21, MRL Rwy 16-34, REIL Rwy 16 and 34.

EC-3, 03 JAN 2019 to 31 JAN 2019

EC-3, 03 JAN 2019 to 31 JAN 2019