

VOR/DME TBD 112.0 Chan 57	APP CRS 302°	Rwy Idg 4999 TDZE 10 Apt Elev 10
--	------------------------	---

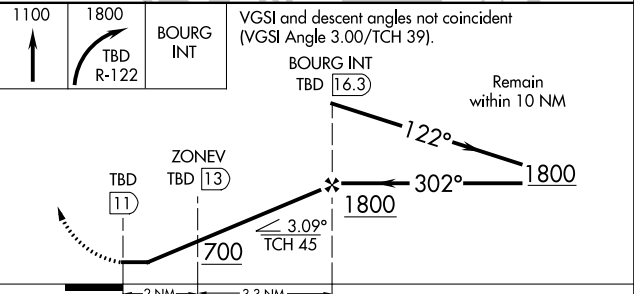
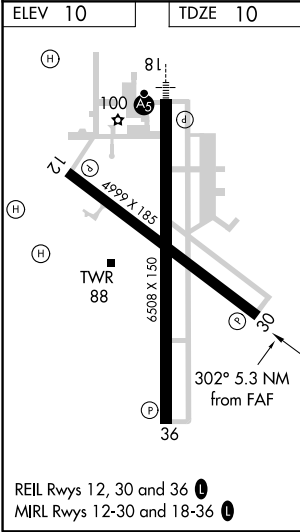
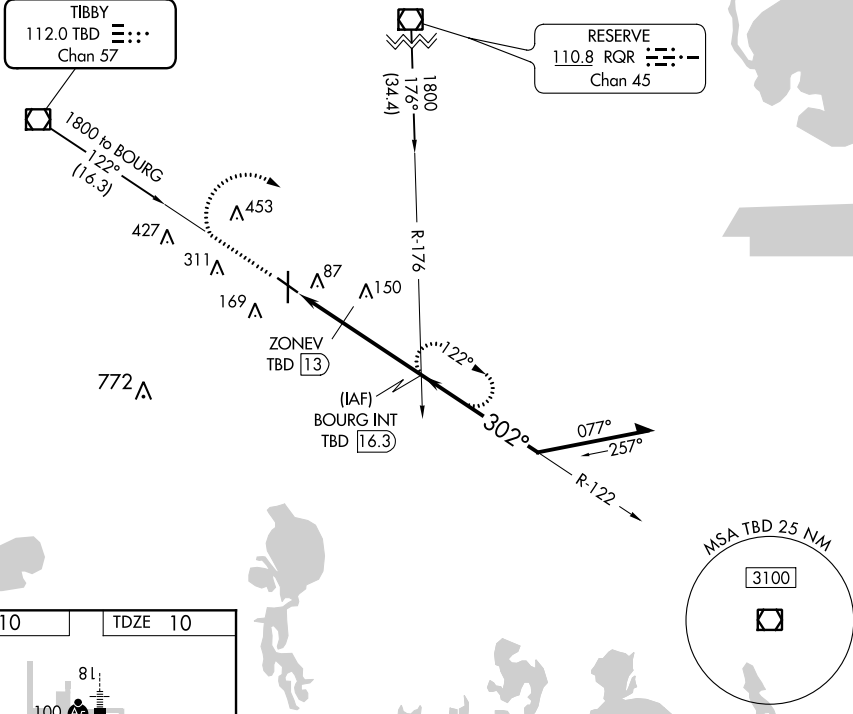
VOR/DME RWY 30

HOUMA-TERREBONNE (HUM)

▼ Visibility reduction by helicopters NA.
▲ When local altimeter setting not received, use Louis Armstrong New Orleans Intl altimeter setting and increase all MDA 80 feet, increase S-30 Cat C/D and Circling Cat D visibility ¼ mile.

MISSED APPROACH: Climb to 1100 then climbing right turn to 1800 via TBD VOR/DME R-122 to BOURG INT/TBD 16.3 DME and hold.

ATIS 120.25	NEW ORLEANS APP CON 118.9 350.35	HOUMA TOWER ★ 125.3 (CTAF) 346.3	GND CON 121.8	CLNC DEL 118.9 (when tower closed)	UNICOM 122.95
-----------------------	--	--	-------------------------	---	-------------------------



CATEGORY	A	B	C	D
S-30	400-1	390 (400-1)		400-1¼ 390 (400-1¼)
CIRCLING	480-1	470 (500-1)	480-1½ 470 (500-1½)	620-2 610 (700-2)

SC-4, 03 JAN 2019 to 31 JAN 2019

SC-4, 03 JAN 2019 to 31 JAN 2019