


WAAS CH 99413 W18A	APP CRS 179°	Rwy Idg 6508 TDZE 9 Apt Elev 10
--	------------------------	--

RNAV (GPS) RWY 18

HOUMA-TERREBONNE (HUM)

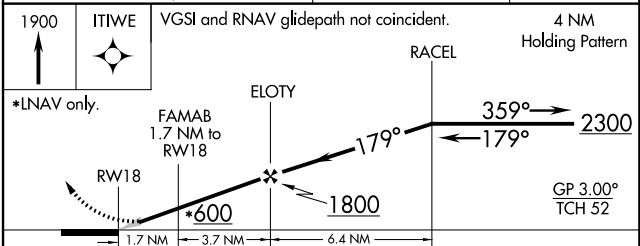
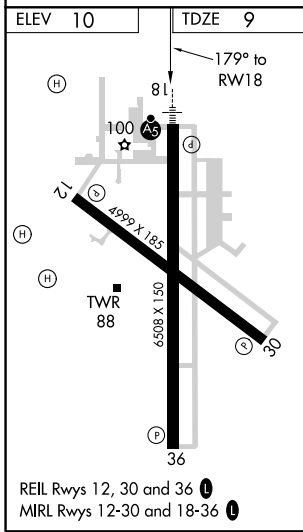
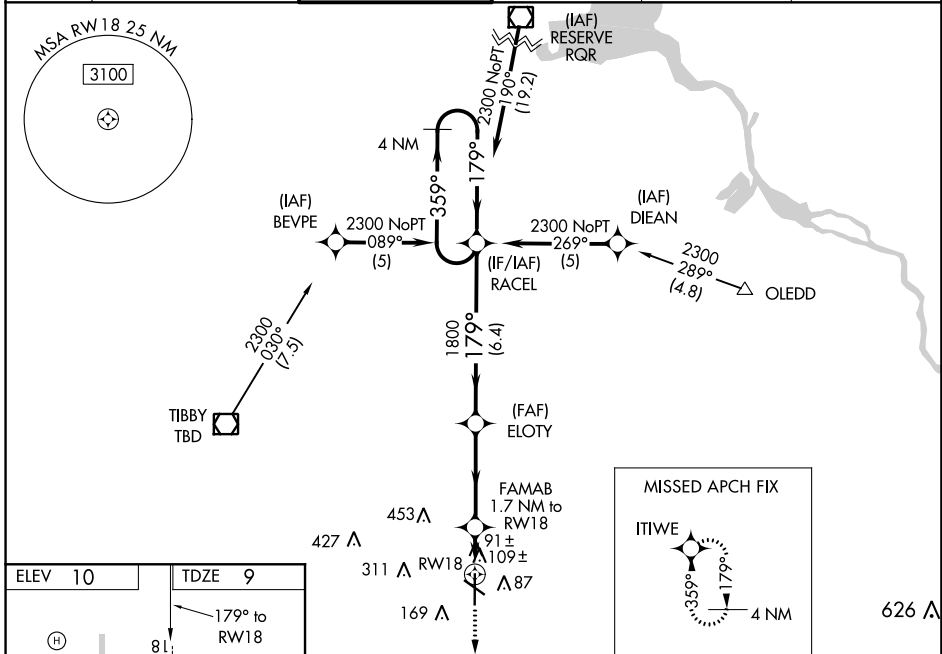
⚠ Baro-VNAV NA when using Louis Armstrong New Orleans Intl altimeter setting. For uncompensated Baro-VNAV systems, LNAV/VNAV NA below -15°C (5°F) or above 49°C (120°F). DME/DME RNP-0.3 NA. When local altimeter setting not received, use Louis Armstrong New Orleans Intl altimeter setting and increase all DA 77 feet and LNAV/VNAV all Cats visibility ¼ mile, increase all MDA 80 feet, LNAV Cat C visibility ¼ mile and Circling Cat D visibility ¼ mile. For inoperative MALSRS when using Louis Armstrong New Orleans Intl altimeter setting increase LPV all Cats visibility to 1 mile.

MALSRS



MISSED APPROACH: Climb to 1900 direct ITIWE and hold.

ATIS 120.25	NEW ORLEANS APP CON 118.9 350.35	HOUMA TOWER ★ 125.3 (CTAF) 346.3	GND CON 121.8	CLNC DEL 118.9 (when tower closed)	UNICOM 122.95
-----------------------	--	--	-------------------------	---	-------------------------



CATEGORY	A	B	C	D
LPV DA		209-1/2	200 (200-1/2)	
LNAV/VNAV DA		450-1	441 (500-1)	
LNAV MDA	440-1/2	431 (500-1/2)	440-3/4 431 (500-3/4)	440-1 431 (500-1)
CIRCLING	480-1	470 (500-1)	480-1 1/2 470 (500-1 1/2)	620-2 610 (700-2)

SC-4, 03 JAN 2019 to 31 JAN 2019

SC-4, 03 JAN 2019 to 31 JAN 2019