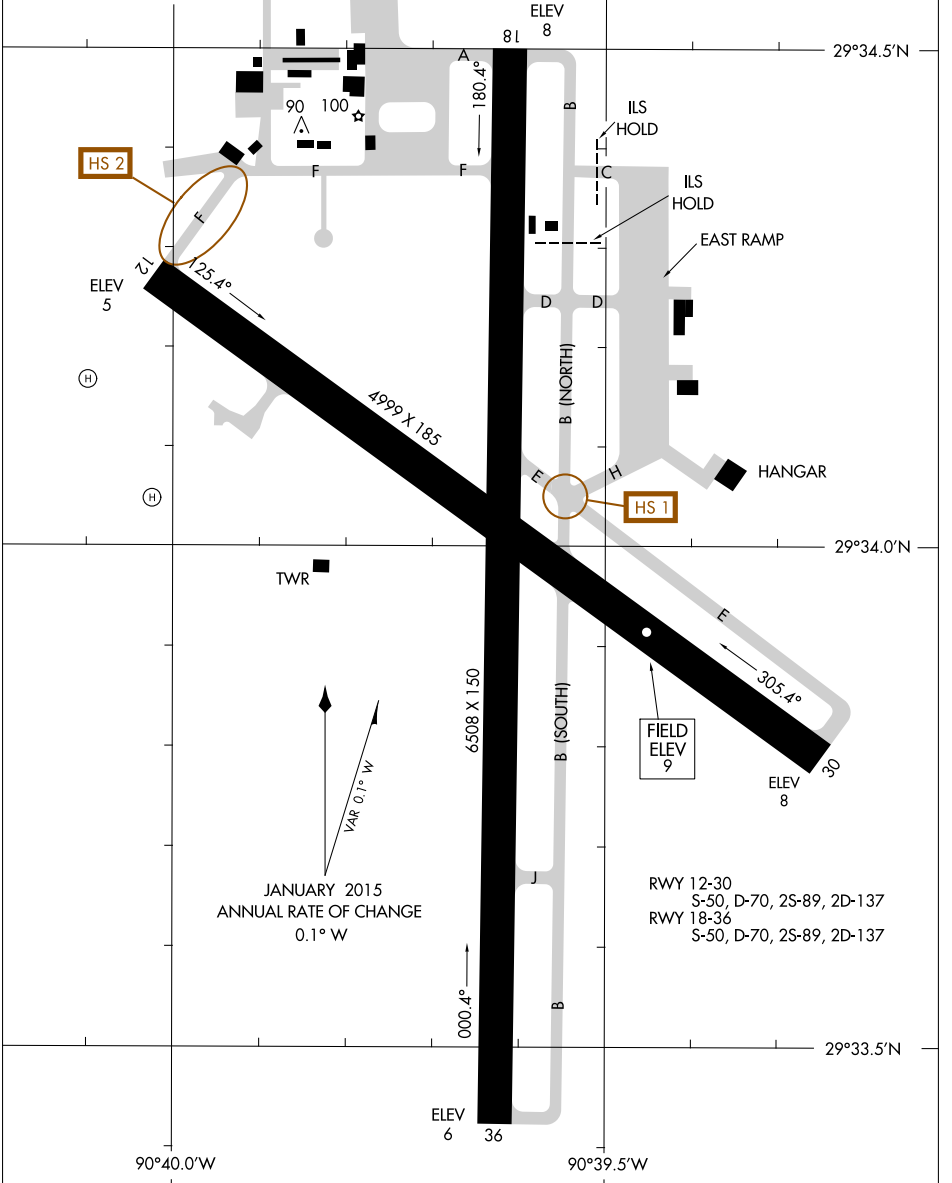


ATIS 120.25
 HOUMA TOWER ★
 125.3 346.3
 GND CON
 121.8
 CLNC DEL
 118.9 (When Tower Closed)

**CAUTION: BE ALERT TO RUNWAY CROSSING CLEARANCES.
 READBACK OF ALL RUNWAY HOLDING INSTRUCTIONS IS REQUIRED.**



SC-4, 03 JAN 2019 to 31 JAN 2019

SC-4, 03 JAN 2019 to 31 JAN 2019

VAR 0.1° W
 JANUARY 2015
 ANNUAL RATE OF CHANGE
 0.1° W

RWY 12-30
 S-50, D-70, 2S-89, 2D-137
 RWY 18-36
 S-50, D-70, 2S-89, 2D-137