

| | | | |
|---|------------------------|---|-------------|
| VOR/DME LWM 112.5 Chan 72 | APP CRS 292° | Rwy Idg TDZE 193 Apt Elev 200 | 5650 |
|---|------------------------|---|-------------|

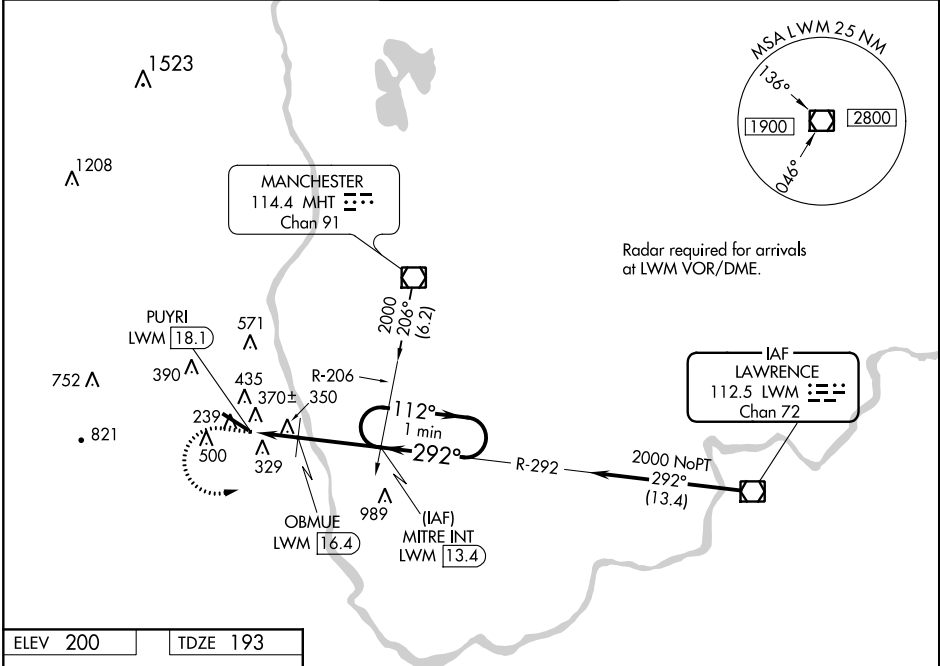
VOR RWY 32

BOIRE FIELD (ASH)

⚠ When local altimeter setting not received, use Manchester altimeter setting and increase all MDA 40 feet. Increase S-32 Cat B and Circling Cat B/C/D visibility ½ mile. OBMUE Fix minimums when using Manchester altimeter setting, increase Circling Cat C/D visibility ½ mile. Helicopter visibility reduction below 1 SM NA. Straight-in and Circling to Rwy 32 NA at night.

MISSED APPROACH: Climb to 1000 then climbing left turn to 2000 on LWM VOR/DME R-292 to MITRE INT/13.4 DME and hold.

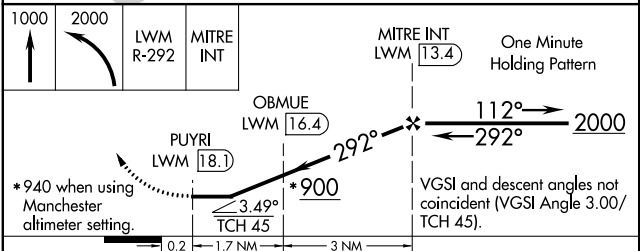
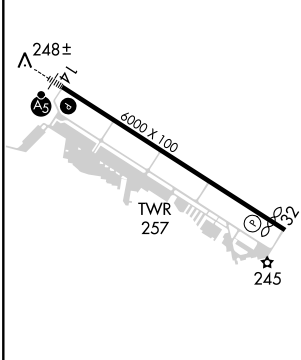
| | | | | |
|----------------------|--|--|-------------------------|--------------------------|
| ATIS 125.1 | BOSTON APP CON 124.9 269.075 | NASHUA TOWER* 133.2 (CTAF) 0 | GND CON 121.8 | CLNC DEL 121.8 |
|----------------------|--|--|-------------------------|--------------------------|



NE-1, 03 JAN 2019 to 31 JAN 2019

NE-1, 03 JAN 2019 to 31 JAN 2019

| | |
|----------|----------|
| ELEV 200 | TDZE 193 |
|----------|----------|



| CATEGORY | A | B | C | D |
|-----------------------------------|-------------------|-------------------|---------------------|----------------------|
| S-32 | 900-1 707 (700-1) | | 900-2 707 (700-2) | |
| C CIRCLING | 900-1 700 (700-1) | | 900-2 700 (700-2) | 1000-2½ 800 (800-2½) |
| OBMUE FIX MINIMUMS (DME REQUIRED) | | | | |
| S-32 | 640-1 447 (500-1) | | 640-1¾ 447 (500-1¾) | |
| C CIRCLING | 820-1 620 (700-1) | 840-1 640 (700-1) | 900-2 700 (700-2) | 1000-2½ 800 (800-2½) |

| | | | | | |
|-------------------|-------------|------|------|------|------|
| HIRL Rwy 14-32 | REIL Rwy 32 | | | | |
| FAF to MAP 4.7 NM | | | | | |
| Knots | 60 | 90 | 120 | 150 | 180 |
| Min:Sec | 4:42 | 3:08 | 2:21 | 1:53 | 1:34 |