



|  |                        |                             |   |
|--|------------------------|-----------------------------|---|
| WAAS<br>CH <b>97730</b><br><b>W14A</b> | APP CRS<br><b>139°</b> | Rwy Idg<br>TDZE<br>Apt Elev | <b>5650</b><br><b>200</b><br><b>200</b> |
|--|------------------------|-----------------------------|---|

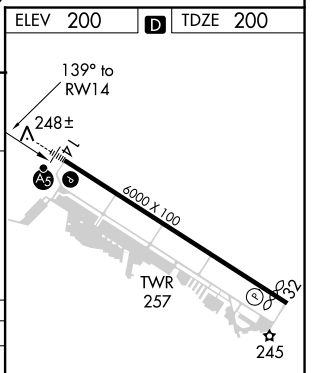
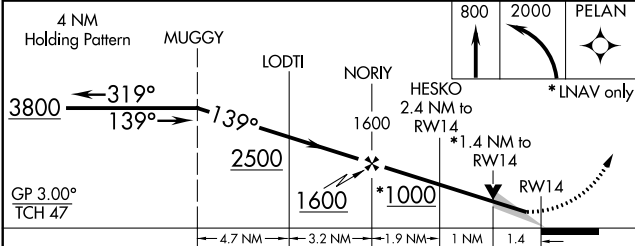
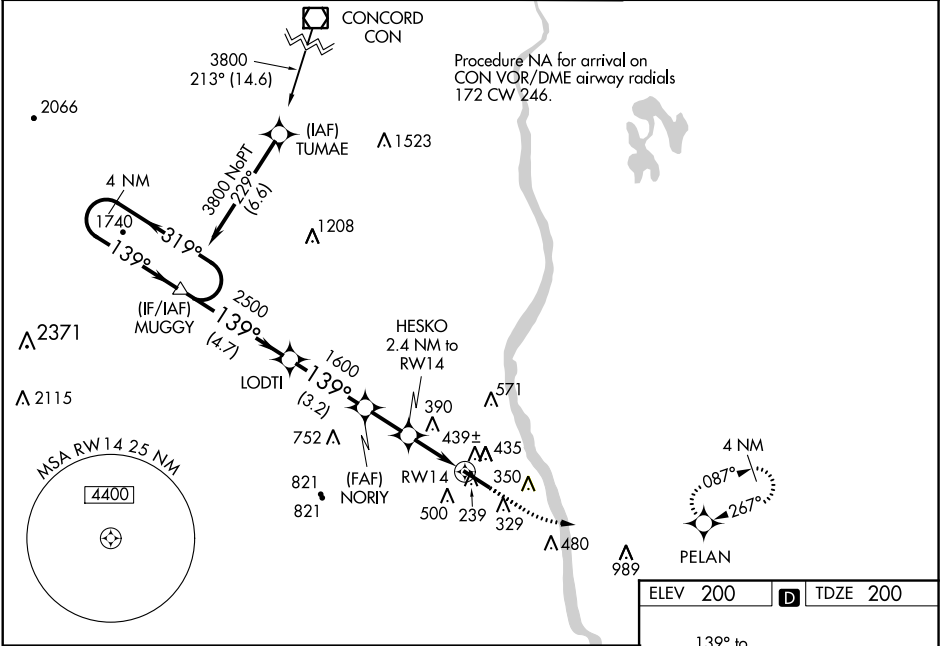
# RNAV (GPS) RWY 14

BOIRE FIELD (ASH)


**⚠** For uncompensated Baro-VNAV systems, LNAV/VNAV NA below -15°C (5°F) or above 54°C (130°F). DME/DME RNP-0.3 NA. When local altimeter setting not received, use Manchester altimeter setting: increase LPV all Cats DA to 432 feet, LNAV/VNAV all Cats DA to 652 feet and LNAV/VNAV all Cats visibility 1/2 mile; increase all MDA 40 feet and Circling Cat D visibility 1/4 mile. Baro-VNAV and VDP NA when using Manchester altimeter setting. For inop MALSR, increase LNAV/VNAV all Cats and LNAV Cat C/D visibility to 1 1/2 mile. For inop MALSR when using Manchester altimeter setting, increase LNAV/VNAV all Cats visibility to 1 1/2 mile.


**MALSR**  MISSED APPROACH: Climb to 800 then climbing left turn to 2000 direct PELAN and hold.

|                      |  |   |                         |                          |
|----------------------|--|---|-------------------------|--------------------------|
| ATIS<br><b>125.1</b> | BOSTON APP CON<br><b>124.9 269.075</b> | NASHUA TOWER *<br><b>133.2 (CTAF)</b>  | GND CON<br><b>121.8</b> | CLNC DEL<br><b>121.8</b> |
|----------------------|--|---|-------------------------|--------------------------|



| CATEGORY          | A                    | B                    | C                    | D                             |
|-------------------|----------------------|----------------------|----------------------|-------------------------------|
| LPV DA            |                      | 400-1/2              | 200 (200-1/2)        |                               |
| LNAV/VNAV DA      |                      | 620-1                | 420 (500-1)          |                               |
| LNAV MDA          | 700-1/2              | 500 (500-1/2)        | 700-1                | 500 (500-1)                   |
| <b>C</b> CIRCLING | 820-1<br>620 (700-1) | 840-1<br>640 (700-1) | 900-2<br>700 (700-2) | 1000-2 1/2<br>800 (800-2 1/2) |

HIRL Rwy 14-32 

REIL Rwy 32 

NE-1, 03 JAN 2019 to 31 JAN 2019

NE-1, 03 JAN 2019 to 31 JAN 2019