

VOR/DME SMO 110.8 Chan 45	APP CRS 212°	Rwy Idg TDZE Apt Elev	N/A N/A 177
--	------------------------	-----------------------------	--

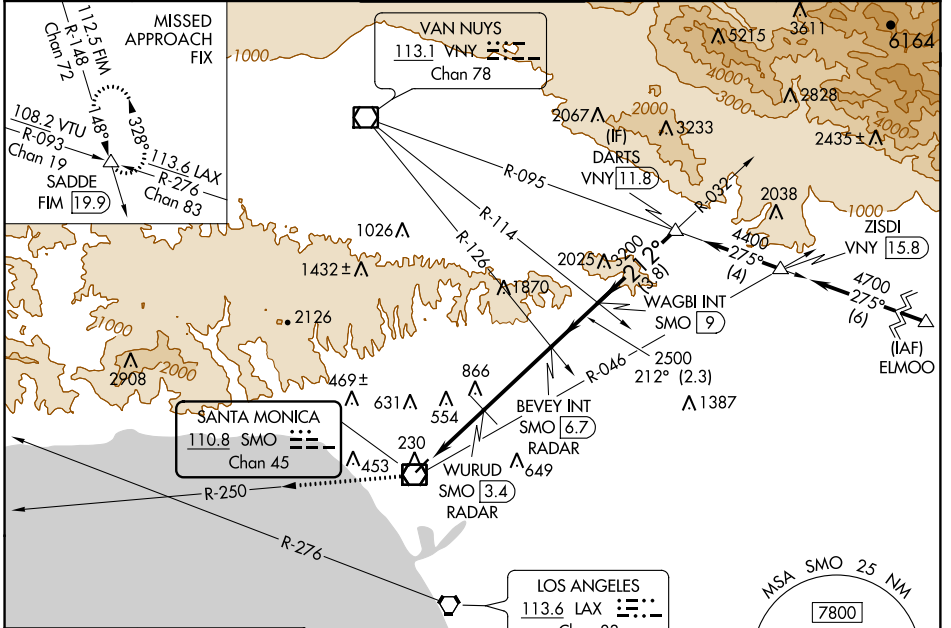
VOR-A

SANTA MONICA MUNI (SMO)

V Helicopter visibility reduction below 1 SM NA.
NA Procedure NA for arrivals at ELMOO on V186 southeast bound.
 Procedure NA at night.
 Circling NA NW of Rwy 3-21.

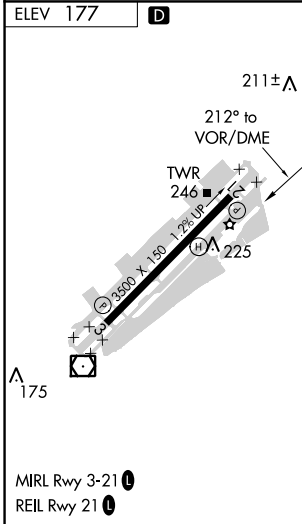
MISSED APPROACH: Climb to 5000 on SMO VOR/DME R-250 and on FIM VORTAC R-148 to SADDE INT/19.9 DME and hold, continue climb-in-hold to 5000.

ATIS 119.15	SOCAL APP CON 128.5 235.975	SANTA MONICA TOWER * 120.1 (CTAF) 257.8	GND CON 121.9	UNICOM 122.95
-----------------------	---------------------------------------	---	-------------------------	-------------------------



SW-3, 03 JAN 2019 to 31 JAN 2019

SW-3, 03 JAN 2019 to 31 JAN 2019



ELEV 177	D				
5000	FIM R-148	SADDE	BEVEY INT SMO [6.7] RADAR	WAGBI INT SMO [9]	DARTS VNY [11.8]
SMO R-250	SMO VOR/DME	WURUD SMO [3.4] RADAR	2500	3200	4400
	3.4 NM	3.2 NM	2.3 NM	3.8 NM	
CATEGORY	A	B	C	D	
C CIRCLING	1540-1¼ 1363 (1400-1¼)	1540-1½ 1363 (1400-1½)	1540-3	1363 (1400-3)	
WURUD FIX MINIMUMS					
C CIRCLING	860-1	683 (700-1)	1180-3	1003 (1100-3)	