

# PEVEE SIX DEPARTURE (RNAV)

SW-3, 03 JAN 2019 to 31 JAN 2019

**TOP ALTITUDE:**  
**CLEEE and CNERY TRANSITIONS: 17000;**  
**OTAYY and TCATE TRANSITIONS: FL200**

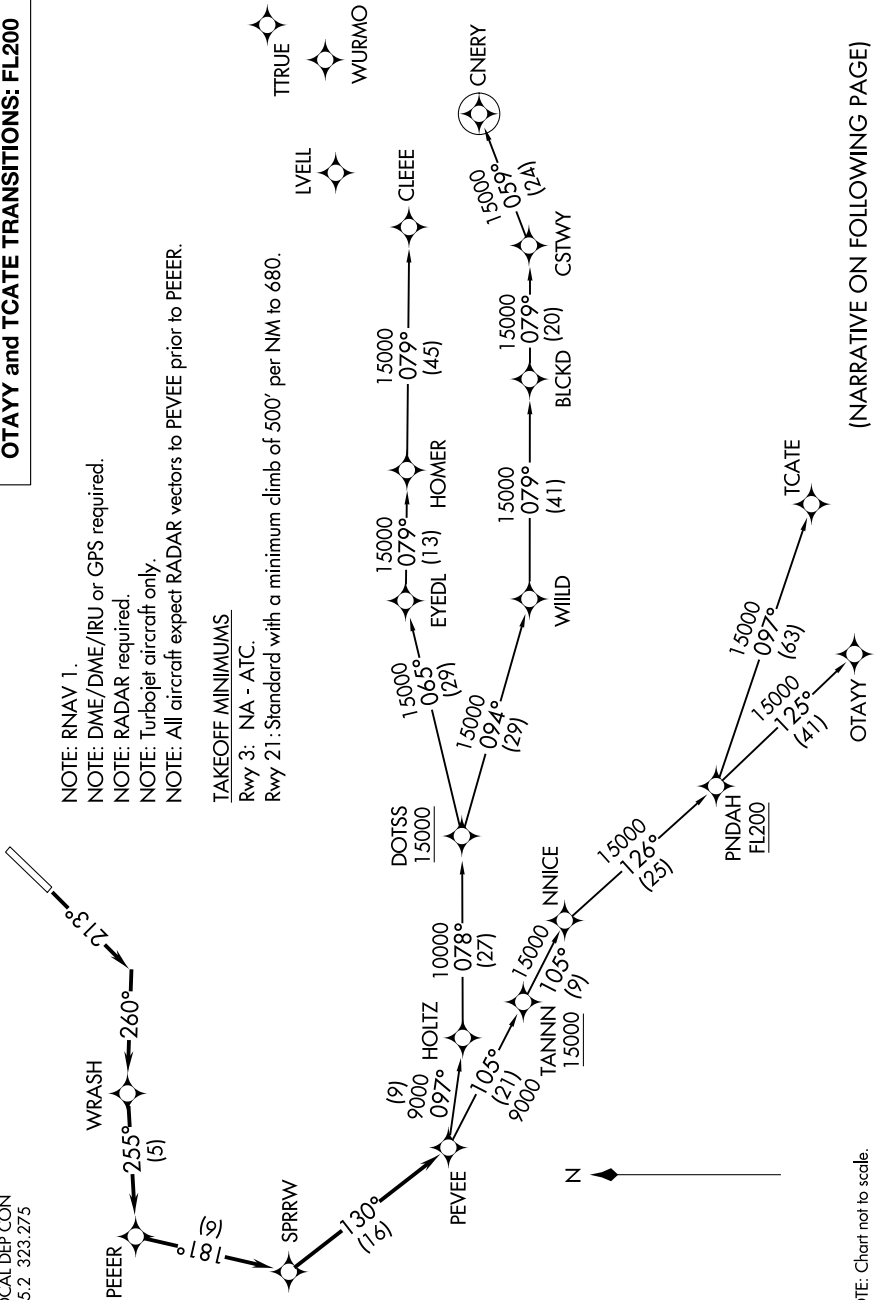
- NOTE: RNAV 1.
- NOTE: DME/DME/IRU or GPS required.
- NOTE: RADAR required.
- NOTE: Turbojet aircraft only.
- NOTE: All aircraft expect RADAR vectors to PEVEE prior to PEEER.

**TAKEOFF MINIMUMS**

Rwy 3: NA - ATC.

Rwy 21: Standard with a minimum climb of 500' per NM to 680.

SANTA MONICA TOWER ★  
120.1 257.8  
SOCAL DEP CON  
125.2 323.275



NOTE: Chart not to scale.

(NARRATIVE ON FOLLOWING PAGE)

SW-3, 03 JAN 2019 to 31 JAN 2019