

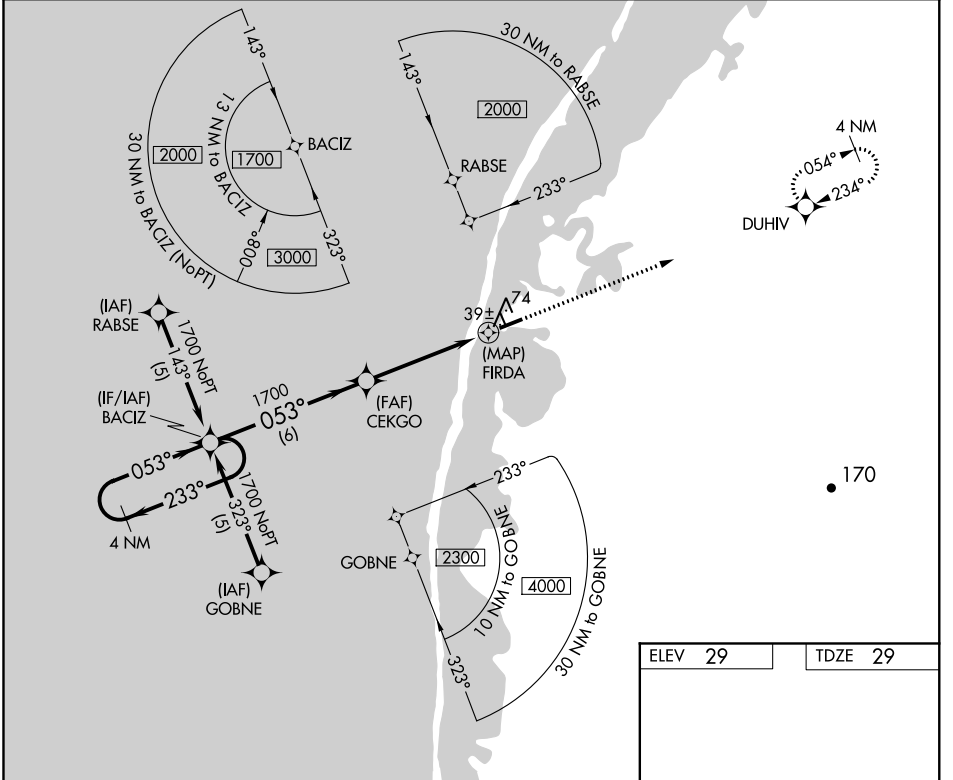
APP CRS	Rwy Idg	<b>4500</b>
<b>053°</b>	TDZE	<b>29</b>
	Apt Elev	<b>29</b>

# RNAV (GPS) RWY 5

POINT LAY LRRS (PIZ)(PPIZ)

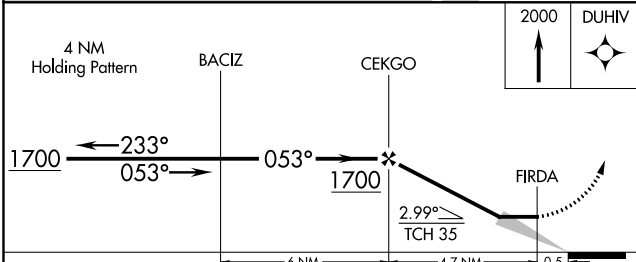
**33** -33°C/-27°F DME/DME RNP- 0.3 NA. When local altimeter setting not received, procedure NA. MISSED APPROACH: Climb to 2000 direct DUHIV and hold.

AWOS-3P <b>135.65</b>	ANCHORAGE CENTER <b>119.65 363.25</b>	BARROW RADIO <b>122.4</b>	CTAF <b>122.8</b>
--------------------------	--	------------------------------	----------------------

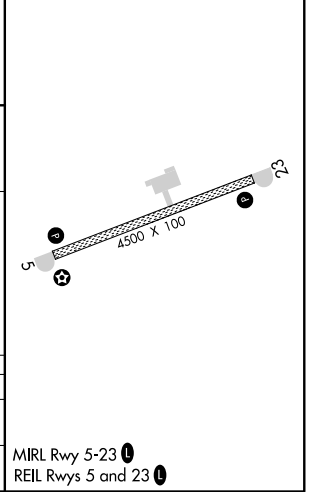


AK, 03 JAN 2019 to 28 FEB 2019

AK, 03 JAN 2019 to 28 FEB 2019



ELEV 29	TDZE 29
---------	---------



CATEGORY	A	B	C	D
LNVA MDA	380-1	351 (400-1)	380-1¼ 351 (400-1¼)	NA
CIRCLING	440-1 411 (500-1)	480-1 451 (500-1)	480-1½ 451 (500-1½)	NA