

NDB/DME PDN 371	APP CRS 143°	Rwy Idg 4000
Chan 32 (109.5)		TDZE 85
		Apt Elev 95

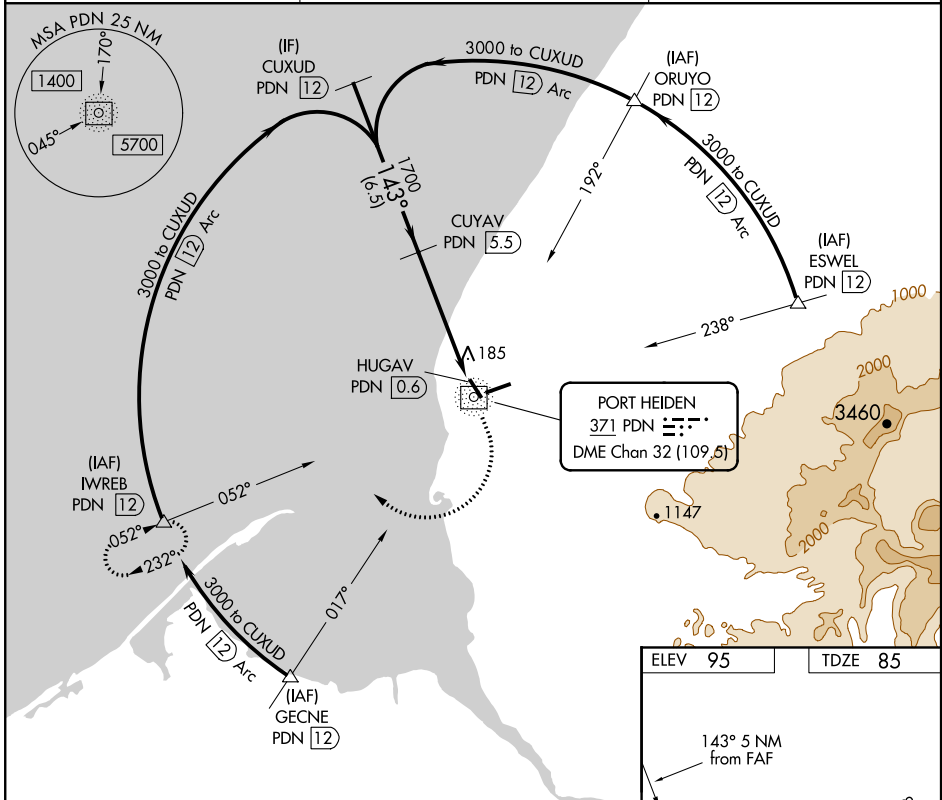
NDB/DME RWY 13

PORT HEIDEN (PTH)(PAPH)

NA If local altimeter setting not received, use Pilot Point altimeter setting and increase all MDAs 140 feet. VDP NA when using Pilot Point altimeter setting.

MISSED APPROACH: Climb to 700 then climbing right turn to 5000 via heading 260° and PDN NDB/DME 232° bearing to IWREB/12 DME and hold, continue climb-in-hold to 5000.

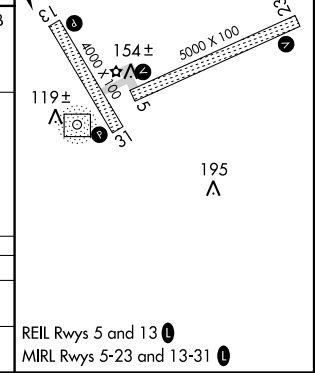
AWOS-3P 135.4	ANCHORAGE CENTER 132.9 288.3	CTAF 122.8
-------------------------	--	----------------------



AK, 03 JAN 2019 to 28 FEB 2019

AK, 03 JAN 2019 to 28 FEB 2019

	CUXUD PDN 12	CUYAV PDN 5.5	700	5000	PDN 232°	IWREB
Procedure			↑	hdg 260°		△
Turn	3000	1700				
NA	6.5 NM	3.7 NM				
			PDN 1.8	HUGAV PDN 0.6	PDN NDB/DME	
CATEGORY	A	B	C	D		
S-13	500-1	415 (500-1)	500-1¼	415 (500-1¼)		
CIRCLING	500-1 405 (500-1)	560-1 465 (500-1)	560-1½ 465 (500-1½)	660-2 565 (600-2)		



REIL Rws 5 and 13
MIRL Rws 5-23 and 13-31