

WAAS CH 97304 W08A	APP CRS 084°	Rwy Idg TDZE Apt Elev	5500 672 672
--	------------------------	-----------------------------	---

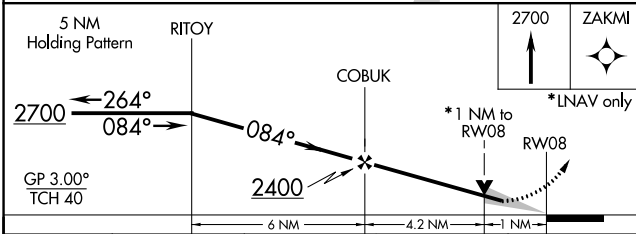
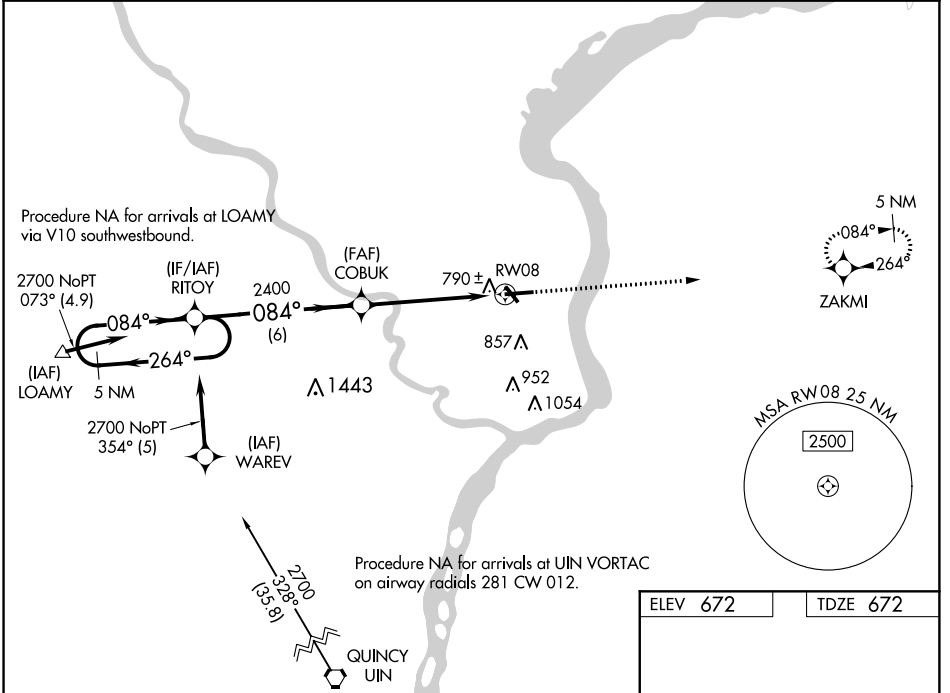
RNAV (GPS) RWY 8

KEOKUK MUNI (EOK)

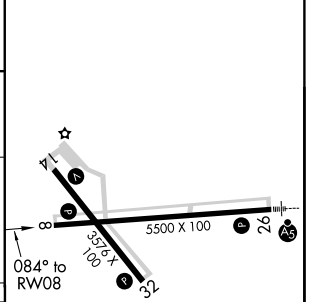
⚠ DME/DME RNP -0.3 NA. For uncompensated Baro-VNAV systems, LNAV/VNAV NA below -16°C (4°F) or above 54°C (130°F). When local altimeter setting not received, use Burlington altimeter setting and increase all DA 59 feet and all MDA 60 feet, increase LNAV and Circling Cat C visibility ¼ mile. VDP and Baro-VNAV NA when using Burlington altimeter setting. Circling to Rwy 32 NA at night.

MISSED APPROACH: Climb to 2700 direct ZAKMI and hold.

AWOS-3 118.375	KANSAS CITY CENTER 126.225 317.775	UNICOM 122.8 (CTAF) 1
--------------------------	--	---------------------------------



ELEV 672	TDZE 672
----------	----------



CATEGORY	A	B	C	D
LPV DA	921-1	250 (300-1)		NA
LNAV/VNAV DA	1060-1½	388 (400-1½)		NA
LNAV MDA	1040-1	368 (400-1)		NA
CIRCLING	1180-1	508 (600-1)	1220-1½ 548 (600-1½)	NA

REIL Rwy 8, 14 and 32 1

MIRL Rwy 8-26 and 14-32 1

NC-3, 03 JAN 2019 to 31 JAN 2019

NC-3, 03 JAN 2019 to 31 JAN 2019