

WAAS CH 45505 W26A	APP CRS 264°	Rwy Idg TDZE Apt Elev	5300 671 672
--	------------------------	-----------------------------	---

RNAV (GPS) RWY 26

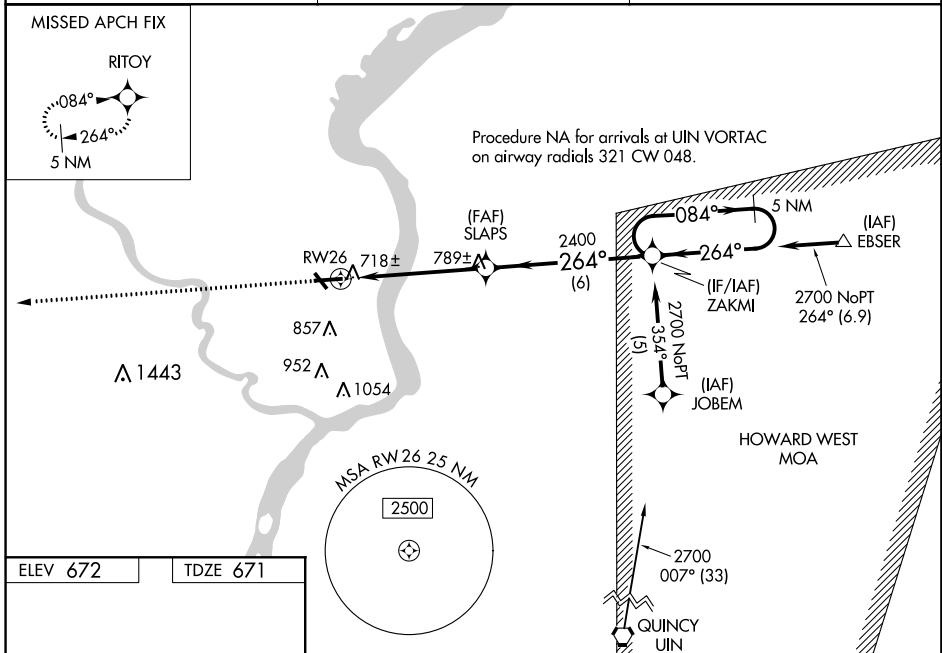
KEOKUK MUNI (EOK)

⚠ DME/DME RNP -0.3 NA. For uncompensated Baro-VNAV systems, LNAV/VNAV NA below -1.6°C (4°F) or above 54°C (130°F). When local altimeter setting not received, use Burlington altimeter setting and increase all DA 59 feet and all MDA 60 feet, increase Circling Cat C visibility ½ mile. For inoperative MALSRL, increase LNAV/VNAV and LNAV Cat A/B/C visibility to 1 mile. For inoperative MALSRL when using Burlington altimeter, setting, increase LNAV Cat A/B visibility to 1 mile. VDP and Baro-VNAV NA when using Burlington altimeter setting. For inoperative MALSRL, increase LPV, LNAV/VNAV and LNAV all Cats visibility to 1 mile. Circling to Rwy 32 NA at night.

MALSRL

MISSED APPROACH:
Climb to 2700 direct RITOY and hold.

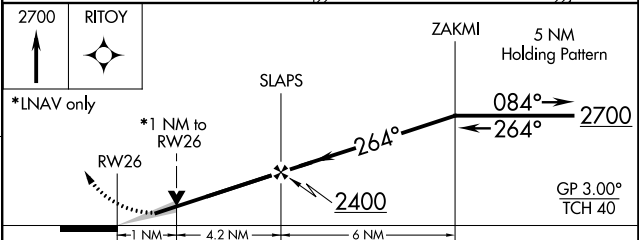
AWOS-3 118.375	KANSAS CITY CENTER 126.225 317.775	UNICOM 122.8 (CTAF) ①
--------------------------	--	---------------------------------



ELEV 672 TDZE 671

264° to RW26

REIL Rwy 8, 14 and 32 ①
MIRL Rwy 8-26 and 14-32 ①



CATEGORY	A	B	C	D
LPV DA	925-¾	254 (300-¾)		NA
LNAV/VNAV DA	979-¾	308 (400-¾)		NA
LNAV MDA	1040-¾	369 (400-¾)		NA
CIRCLING	1180-1	508 (600-1)	1220-1½ 548 (600-1½)	NA

NC-3, 03 JAN 2019 to 31 JAN 2019

NC-3, 03 JAN 2019 to 31 JAN 2019