


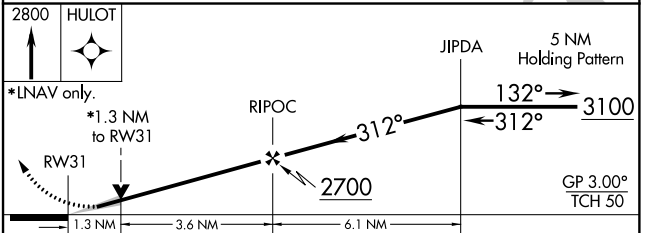
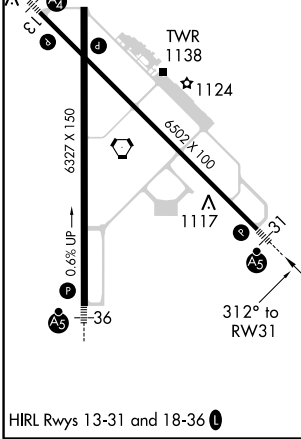
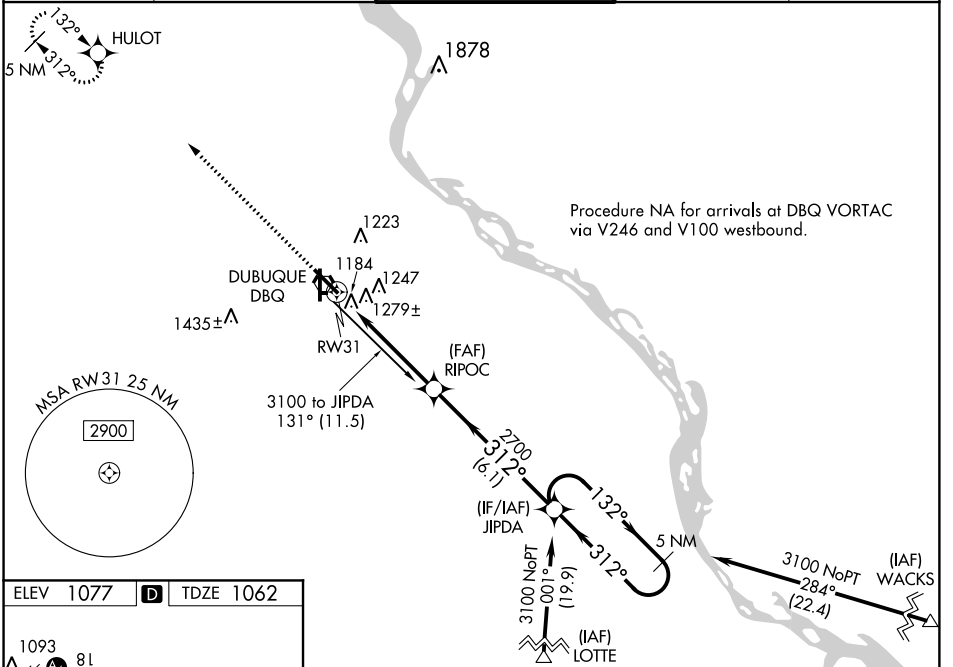
WAAS CH <b>69400</b> <b>W31A</b>	APP CRS <b>312°</b>	Rwy Idg TDZE <b>1062</b> Apt Elev <b>1077</b>
--	------------------------	---

# RNAV (GPS) RWY 31

DUBUQUE RGNL (DBQ)

<p><b>⚠</b></p> <p><b>⚠</b></p> <p><b>⚠</b></p>	<p>For inop MALSR, increase LPV all Cats visibility to 1½ and LNAV Cats A, B visibility to 1. Baro-VNAV NA when using Monticello altimeter setting. For uncompensated Baro-VNAV systems, LNAV/VNAV NA below -17°C (2°F) or above 46°C (116°F). DME/DME RNP-0.3 NA. VDP NA when using Monticello altimeter setting. If local altimeter setting not received, use Monticello altimeter setting and increase all DAs/MDAs 100 feet.</p>	<p>MALSR</p> 	<p>MISSED APPROACH: Climb to 2800 direct HULOT and hold.</p>
---	--	--	--

<p>ATIS <b>127.25</b></p>	<p>CHICAGO CENTER <b>133.95 281.4</b></p>	<p>DUBUQUE TOWER ★ <b>119.5 (CTAF) 254.4</b></p>	<p>GND CON <b>121.8</b></p>	<p>UNICOM <b>122.95</b></p>
-------------------------------	---	--	---------------------------------	---------------------------------



CATEGORY	A	B	C	D
LPV DA		1481-1	419 (500-1)	
LNAV/ VNAV DA		1603-1½	541 (600-1½)	
LNAV MDA	1540-¾	478 (500-¾)		1540-1 478 (500-1)
CIRCLING	1620-2	543 (600-2)		1640-2 563 (600-2)

NC-3, 03 JAN 2019 to 31 JAN 2019

NC-3, 03 JAN 2019 to 31 JAN 2019