

LOC/DME I-FUQ <b>110.9</b> Chan <b>46</b>	APP CRS <b>357°</b>	Rwy Idg TDZE Apt Elev	<b>6327</b> <b>1047</b> <b>1076</b>
---	------------------------	-----------------------------	---

# ILS or LOC RWY 36

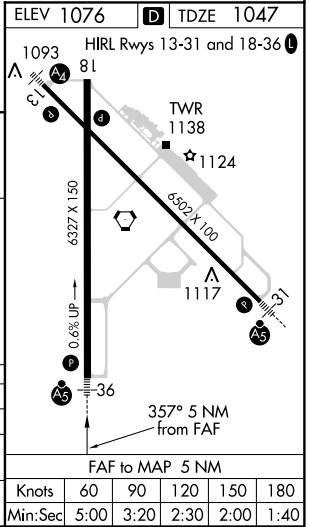
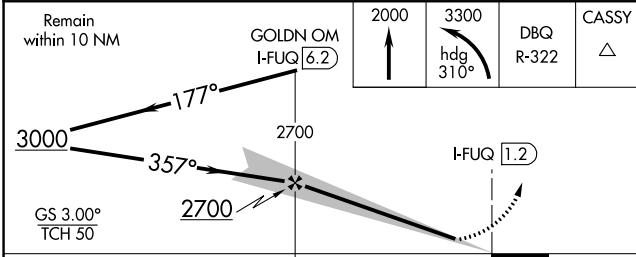
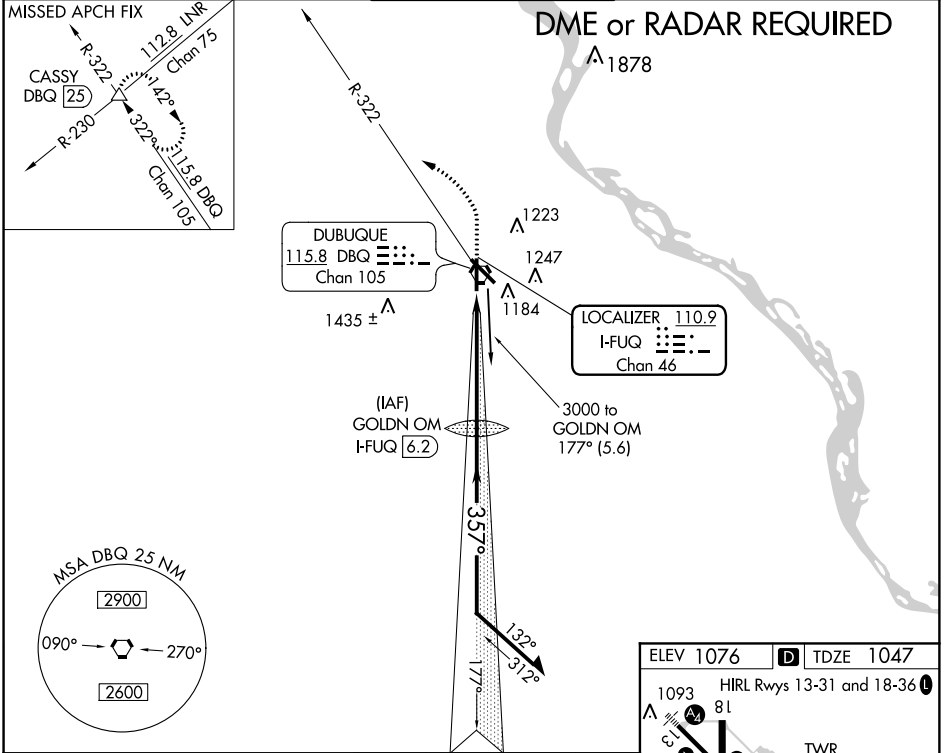
DUBUQUE RGNL (DBQ)

**MISSED APCH FIX**  
 -34°C/-29°F \* RVR 1800 authorized with the use of FP or AP or HUD to DA.

**MALS R**

**MISSED APPROACH:** Climb to 2000 then climbing left turn to 3300 via heading 310° and DBQ R-322 to CASSY INT/DBQ 25 DME and hold.

ATIS <b>127.25</b>	CHICAGO CENTER <b>133.95 281.4</b>	DUBUQUE TOWER★ <b>119.5 (CTAF) 254.4</b>	GND CON <b>121.8</b>	UNICOM <b>122.95</b>
-----------------------	---------------------------------------	---	-------------------------	-------------------------



CATEGORY	A	B	C	D
S-ILS 36	* 1247/24		200 (200-½)	
S-LOC 36	1460/24	413 (400-½)	1460/40	413 (400-¾)
CIRCLING	1580-1	504 (600-1)	1580-1½ 504 (600-1½)	1640-2 564 (600-2)

NC-3, 03 JAN 2019 to 31 JAN 2019

NC-3, 03 JAN 2019 to 31 JAN 2019