

RNAV (GPS) RWY 28

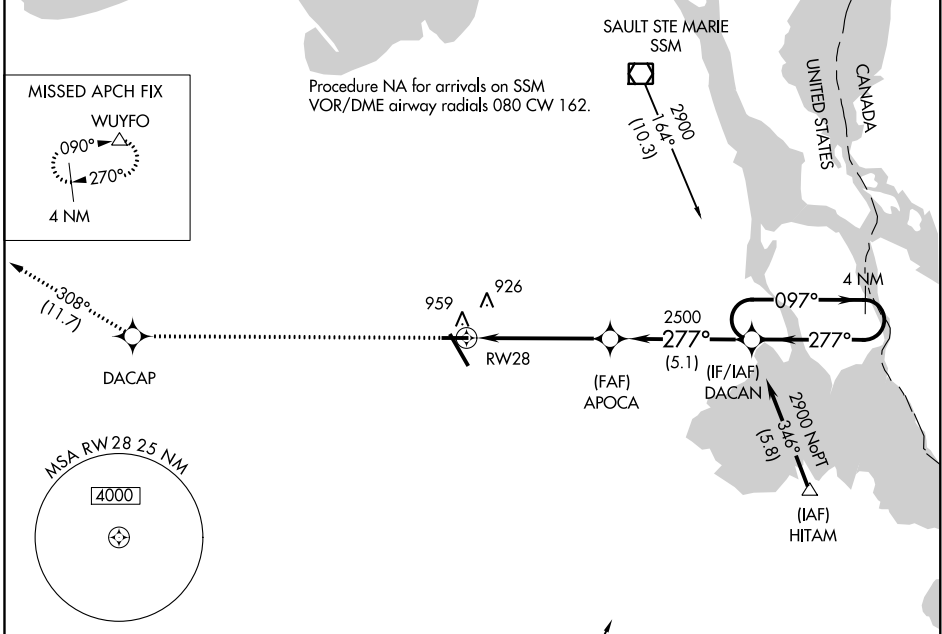
CHIPPEWA COUNTY INTL (CIU)

APP CRS 277°	Rwy Idg TDZE Apt Elev	5000 799 799
------------------------	-----------------------------	---

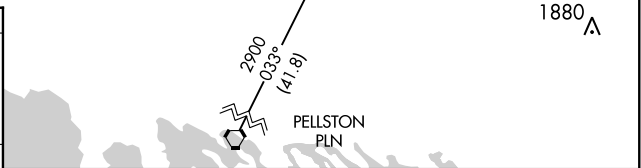
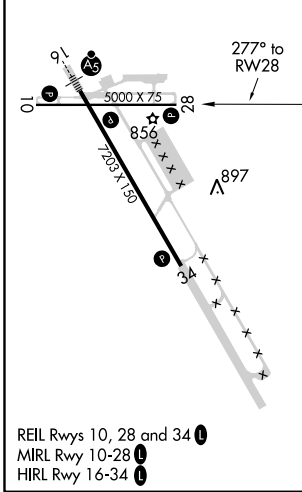
⚠ DME/DME RNP-0.3 NA. Helicopter visibility reduction below ¾ SM NA. When local altimeter setting not received, use Sault Ste Marie Muni/ Sanderson Field altimeter setting and increase all MDA 60 feet, increase LNAV and Circling visibility Cat C/D ¼ mile. Night landing: Rwy 28 NA.

MISSED APPROACH: Climb to 3000 direct DACAP and track 308° to WUYFO and hold.

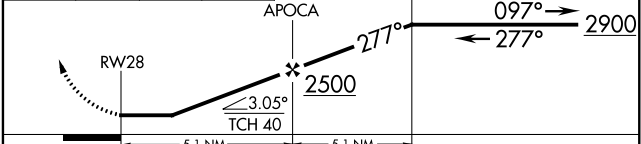
AWOS-3PT 127.575	TORONTO CENTER 132.65 344.5	UNICOM 123.0 (CTAF)
----------------------------	---------------------------------------	-------------------------------



ELEV 799	D TDZE 799
----------	-------------------



3000	DACAP	fr 308°	WUYFO	DACAN	4 NM Holding Pattern
------	-------	---------	-------	-------	----------------------



CATEGORY	A	B	C	D
LNAV MDA	1220-1	421 (500-1)	1220-1½	421 (500-1½)
CIRCLING	1260-1	461 (500-1)	1260-1½ 461 (500-1½)	1360-2 561 (600-2)

EC-1, 03 JAN 2019 to 31 JAN 2019

EC-1, 03 JAN 2019 to 31 JAN 2019