

19003

AIRPORT DIAGRAM

AL-780 (FAA)

KANSAS CITY INTL (MCI)
KANSAS CITY, MISSOURI

D-ATIS
128.375
INTERNATIONAL TOWER
128.2 254.25
GND CON
121.8
CLNC DEL
135.7
CPDLC

94°43'W

94°42'W

D

 NON MOVEMENT AREA



JANUARY 2015
ANNUAL RATE OF CHANGE
0.1° W

39°19'N

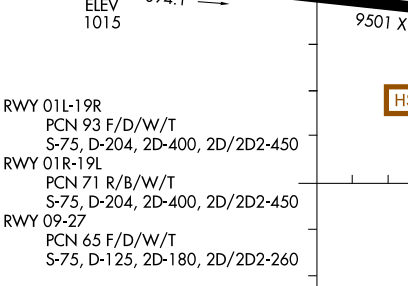
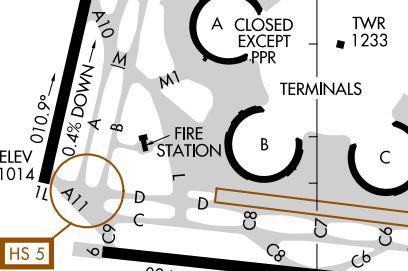
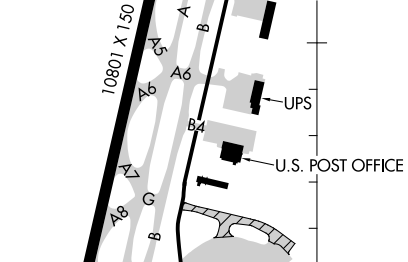
HS 3

CAUTION: BE ALERT TO RUNWAY CROSSING CLEARANCES.
READBCK OF ALL RUNWAY HOLDING INSTRUCTIONS IS REQUIRED.

ASSC in use. Operate transponders with altitude reporting mode and ADS-B (if equipped) enabled on all airport surfaces.

NC-3, 03 JAN 2019 to 31 JAN 2019

NC-3, 03 JAN 2019 to 31 JAN 2019



RWY 01L-19R
PCN 93 F/D/W/T
S-75, D-204, 2D-400, 2D/2D2-450

RWY 01R-19L
PCN 71 R/B/W/T
S-75, D-204, 2D-400, 2D/2D2-450

RWY 09-27
PCN 65 F/D/W/T
S-75, D-125, 2D-180, 2D/2D2-260

FIELD ELEV 1027

39°17'N

AIRPORT DIAGRAM

19003

KANSAS CITY, MISSOURI
KANSAS CITY INTL (MCI)