

WAAS CH 70623 W12A	APP CRS 126°	Rwy Idg TDZE Apt Elev	7959 597 597
--	------------------------	-----------------------------	---

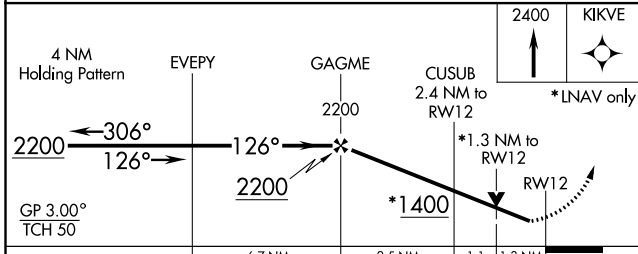
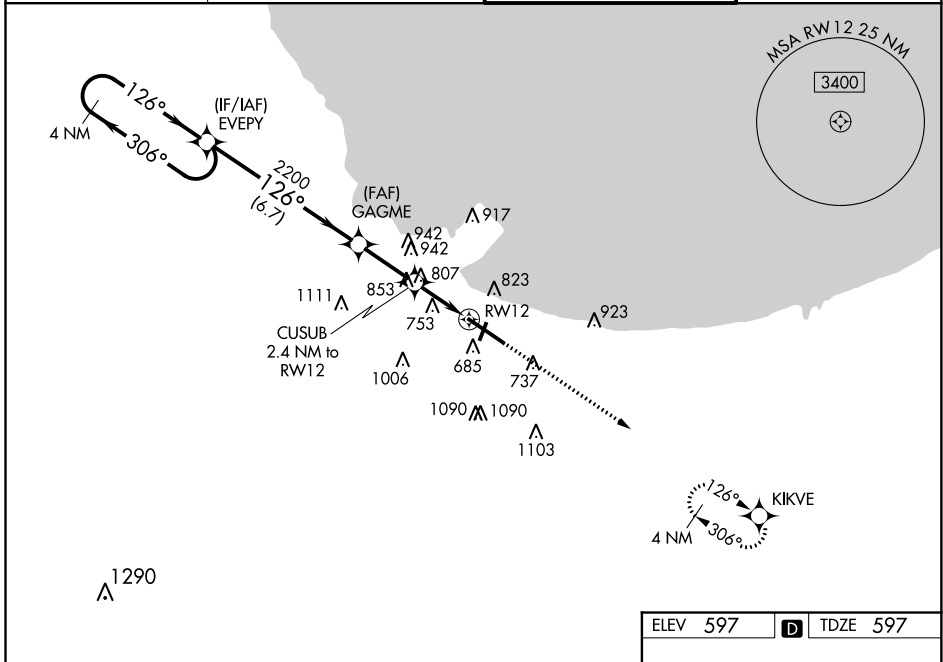
RNAV (GPS) Y RWY 12

GARY/CHICAGO INTL (GYY)

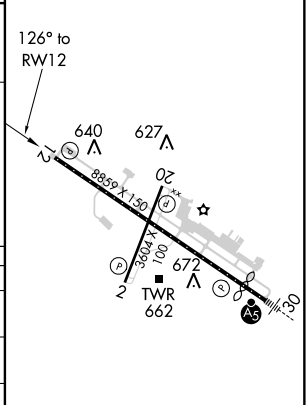
▽ For uncompensated Baro-VNAV systems, LNAV/VNAV NA below -16°C (4°F) or above 54°C (130°F).
▲ DME/DME RNP-0.3 NA.
 Rwy 12 helicopter visibility reduction below ¾ SM NA.

MISSED APPROACH:
 Climb to 2400 direct KIKVE and hold.

ATIS 134.575	CHICAGO APP CON 133.1 285.6	GARY TOWER * 125.6 (CTAF) 0	GND CON 121.9
------------------------	---------------------------------------	--	-------------------------



ELEV 597	D TDZE 597
----------	-------------------



CATEGORY	A	B	C	D
LPV DA		797- ³ / ₄	200 (200- ³ / ₄)	
LNAV/VNAV DA		1049-1 ³ / ₈	452 (500-1 ³ / ₈)	
LNAV MDA	1060-1	463 (500-1)	1060-1 ³ / ₈	463 (500-1 ³ / ₈)
C CIRCLING	1140-1 543 (600-1)	1180-1 583 (600-1)	1400-2 ¹ / ₄ 803 (900-2 ¹ / ₄)	1420-2 ³ / ₄ 823 (900-2 ³ / ₄)

REIL Rwy 2, 12 and 20 **0**
 HIRL Rwy 12-30 **0**
 MIRL Rwy 2-20 **0**

EC-2, 03 JAN 2019 to 31 JAN 2019

EC-2, 03 JAN 2019 to 31 JAN 2019