

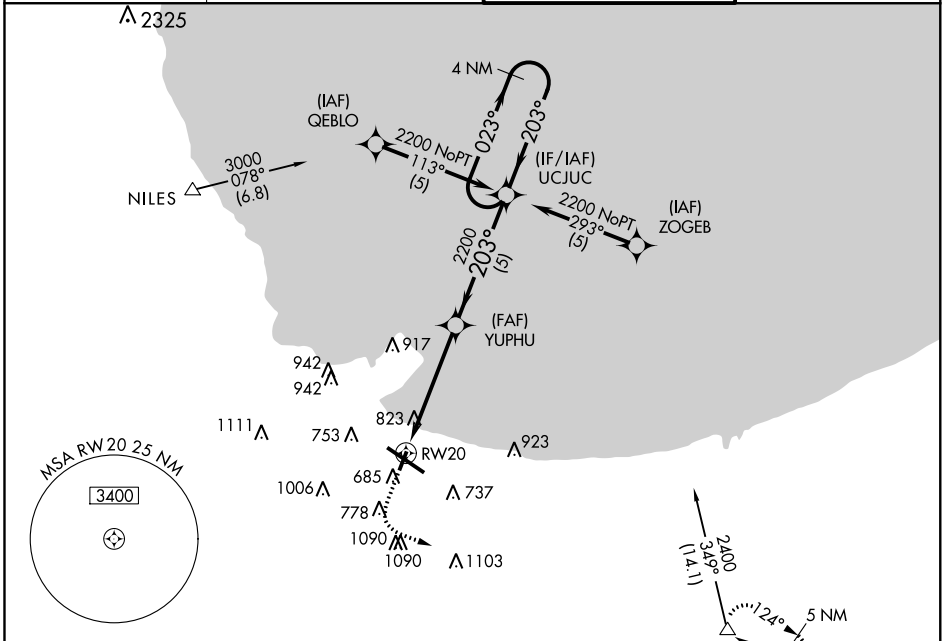
APP CRS 203°	Rwy Idg 3604
	TDZE 591
	Apt Elev 592

RNAV (GPS) RWY 20

GARY/CHICAGO INTL (GYY)

NA	GPS or RNP-0.3 required. DME/DME RNP-0.3 NA.	MISSED APPROACH: Climb to 1500 then climbing left turn to 2400 direct HALIE WP and hold.	
----	---	--	--

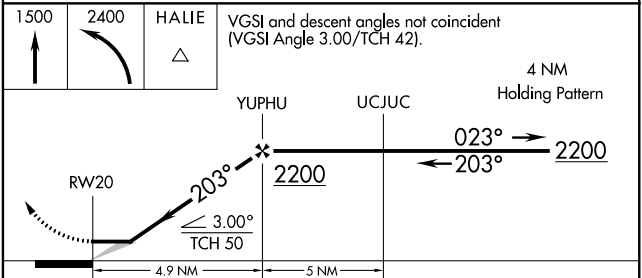
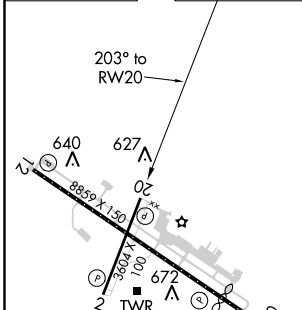
ATIS 134.575	CHICAGO APP CON 133.1 285.6	GARY TOWER ★ 125.6 (CTAF) 0	GND CON 121.9
------------------------	---------------------------------------	---------------------------------------	-------------------------



EC-2, 03 JAN 2019 to 31 JAN 2019

EC-2, 03 JAN 2019 to 31 JAN 2019

ELEV 592	D	TDZE 591
----------	----------	----------



VGSI and descent angles not coincident (VGSI Angle 3.00/TCH 42).	4 NM Holding Pattern			
	YUPHU UCJUC			
	RWY 20 203° 2200			
	4.9 NM 5 NM			
CATEGORY	A	B	C	D
GLS PA DA	NA			
LNAV/VNAV DA	NA			
LNAV MDA	1080-1 489 (500-1)	1080-1¼ 489 (500-1¼)	1080-1½ 489 (500-1½)	1080-1½ 489 (500-1½)
CIRCLING	1140-1 548 (600-1)	1180-1½ 588 (600-1½)	1180-2 588 (600-2)	1180-2 588 (600-2)

REIL Rwy 2, 12 and 20 **0**
HIRL Rwy 12-30 **0**
MIRL Rwy 2-20 **0**