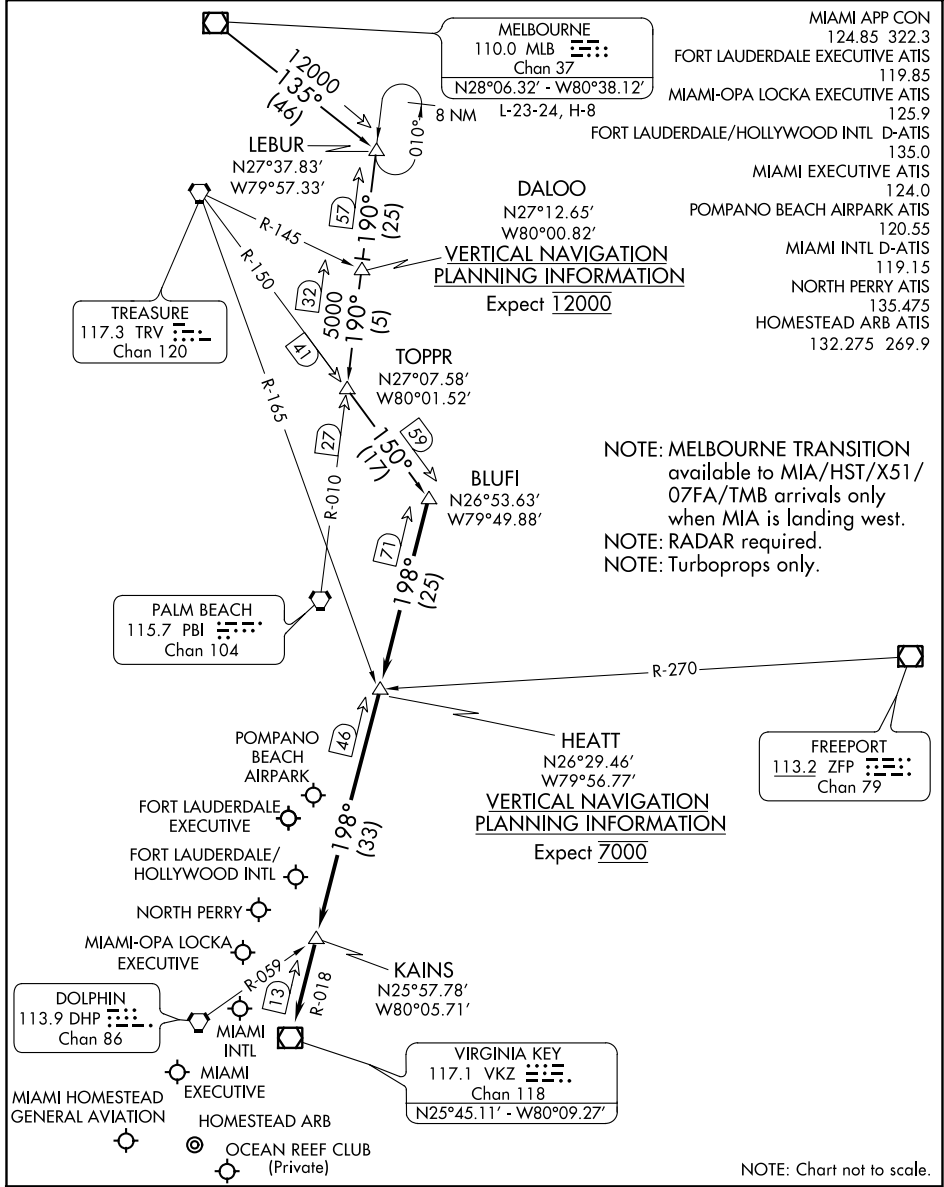


# BLUF1 FOUR ARRIVAL

FORT LAUDERDALE, FLORIDA



- MIAMI APP CON 124.85 322.3
- FORT LAUDERDALE EXECUTIVE ATIS 119.85
- MIAMI-OPA LOCKA EXECUTIVE ATIS 125.9
- FORT LAUDERDALE/HOLLYWOOD INTL D-ATIS 135.0
- MIAMI EXECUTIVE ATIS 124.0
- POMPANO BEACH AIRPARK ATIS 120.55
- MIAMI INTL D-ATIS 119.15
- NORTH PERRY ATIS 135.475
- HOMESTEAD ARB ATIS 132.275 269.9

NOTE: MELBOURNE TRANSITION available to MIA/HST/X51/07FA/TMB arrivals only when MIA is landing west.  
 NOTE: RADAR required.  
 NOTE: Turboprops only.

VERTICAL NAVIGATION PLANNING INFORMATION  
 Expect 7000

MELBOURNE TRANSITION (MLB.BLUF14): From over MLB VOR/DME on MLB R-135 to LEBUR INT/MLB 46 DME, then on PBI R-010 to TOPPR INT/PBI 30 DME, then on TRV R-150 to BLUFI INT. Thence . . .  
 . . . from over BLUFI INT/VKZ 71 DME on VKZ R-018 to HEATT INT/VKZ 46 DME, then on VKZ R-018 to KAINS INT, then on VKZ R-018 to VKZ VOR/DME. Expect RADAR vectors to final approach course after KAINS INT.

# BLUF1 FOUR ARRIVAL

FORT LAUDERDALE, FLORIDA

SE-3, 03 JAN 2019 to 31 JAN 2019

SE-3, 03 JAN 2019 to 31 JAN 2019

NOTE: Chart not to scale.