

APP CRS 309°	Rwy Idg 4499
	TDZE 1715
	Apt Elev 1723

RNAV (GPS) RWY 31

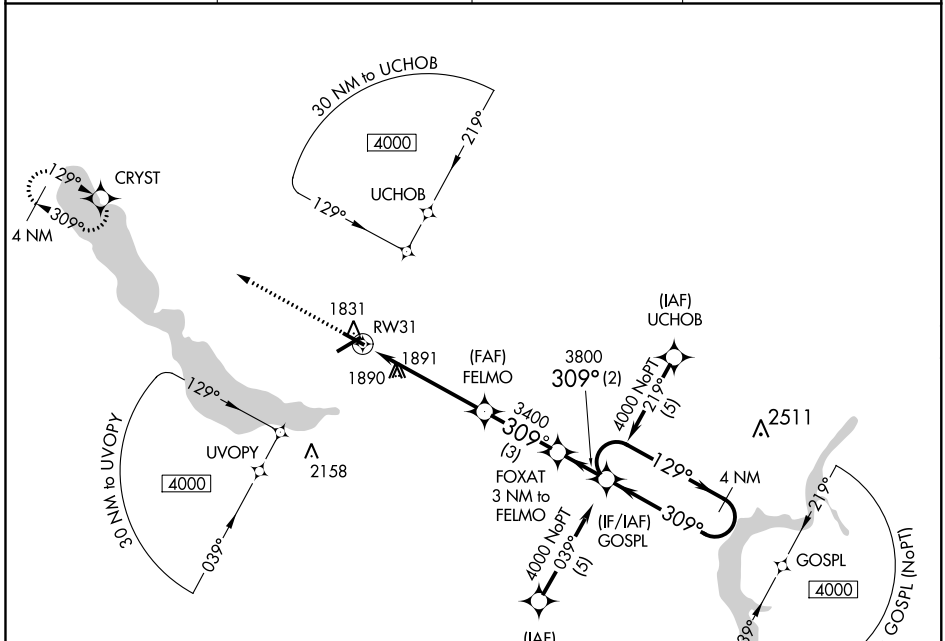
CHAUTAUQUA COUNTY/JAMESTOWN (JHW)

▼ DME/DME RNP-0.3 NA. Rwy 31 Straight-in/Circling and Circling to Rwy 13 NA at night. When local altimeter setting not received, use Dunkirk altimeter setting and increase all MDA 200 feet; increase LNAV Cats C and D visibility ½, Circling Cats C and D visibility ½ mile. Helicopter visibility reduction below 1 SM NA.

▲ NA

MISSED APPROACH: Climb to 4000 direct CRYST WP and hold.

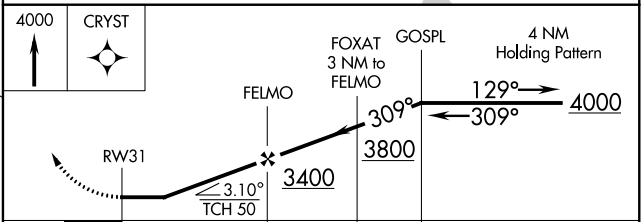
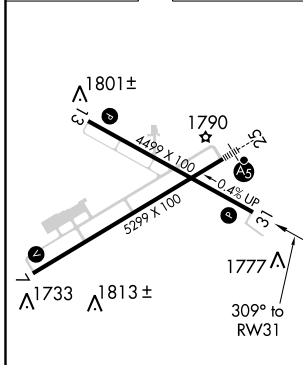
AWOS-3PT 118.425	BUFFALO APP CON * 126.05	CLNC DEL 126.05	UNICOM 122.7 (CTAF) 0
----------------------------	------------------------------------	---------------------------	---------------------------------



NE-2, 03 JAN 2019 to 31 JAN 2019

NE-2, 03 JAN 2019 to 31 JAN 2019

ELEV 1723	D	TDZE 1715
-----------	----------	-----------



CATEGORY	A	B	C	D
LNAV MDA	2200-1	485 (500-1)	2200-1½ 485 (500-1¼)	2200-1½ 485 (500-1½)
CIRCLING	2200-1	477 (500-1)	2240-1½ 517 (600-1½)	2280-2 557 (600-2)