

WAAS CH <b>62910</b> <b>W25A</b>	APP CRS <b>249°</b>	Rwy Idg TDZE Apt Elev	<b>5299</b> <b>1721</b> <b>1723</b>
--	------------------------	-----------------------------	---

# RNAV (GPS) RWY 25

CHAUTAUQUA COUNTY/JAMESTOWN (JHW)

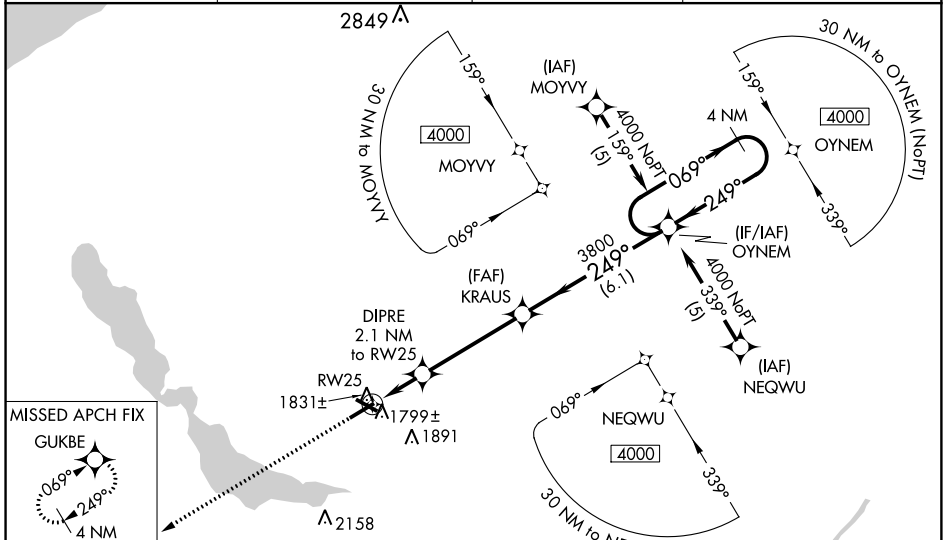
**⚠** For uncompensated Baro-VNAV systems, LNAV/VNAV NA below -18°C (0°F) or above 54°C (130°F). DME/DME RNP-0.3 NA. When local altimeter setting not received, use Dunkirk altimeter setting and increase LPV DA to 2113, LNAV/VNAV DA to 2246, and all MDA 200 feet; increase LPV all Cats, LNAV/VNAV all Cats, LNAV Cat C, and Circling Cats C and D visibility ½ mile; increase LNAV Cat D visibility ¼ mile. For inoperative MALS, increase LNAV Cat D visibility to 1 ¼ mile. For inoperative MALS when using Dunkirk altimeter setting, increase LPV all Cats visibility to 1 ½ mile. Baro-VNAV and VDP NA when using Dunkirk altimeter setting. Circling to Rwy 13/31 NA at night.

MALS

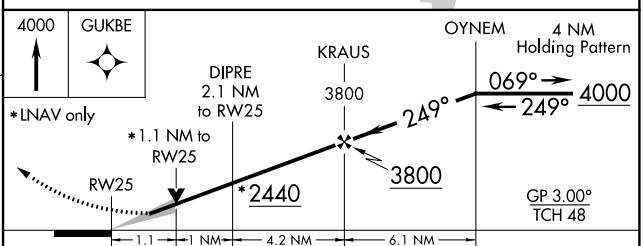
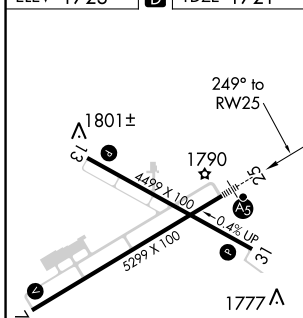


**MISSED APPROACH:**  
Climb to 4000 direct GUKBE and hold.

AWOS-3PT <b>118.425</b>	BUFFALO APP CON * <b>126.05</b>	CLNC DEL <b>126.05</b>	UNICOM <b>122.7 (CTAF) 0</b>
----------------------------	------------------------------------	---------------------------	---------------------------------



ELEV 1723	<b>D</b>	TDZE 1721
-----------	----------	-----------



CATEGORY	A	B	C	D
LPV DA		1921-½	200 (200-½)	
LNAV/VNAV DA		2054-¾	333 (400-¾)	
LNAV MDA	2100-½	379 (400-½)		2100-1 379 (400-1)
CIRCLING	2200-1	477 (500-1)	2240-1½ 517 (600-1½)	2280-2 557 (600-2)

REIL Rwy 31  
MIRL Rwy 13-31 0  
HIRL Rwy 7-25 0

NE-2, 03 JAN 2019 to 31 JAN 2019

NE-2, 03 JAN 2019 to 31 JAN 2019