

WAAS CH 90429 W23A	APP CRS 233°	Rwy Idg TDZE Apt Elev	5801 650 650
--	------------------------	-----------------------------	---

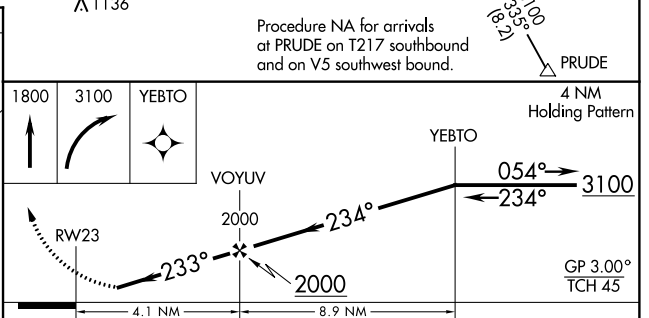
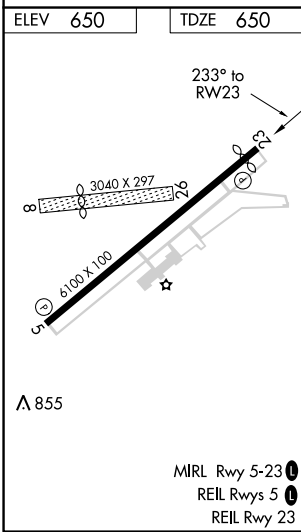
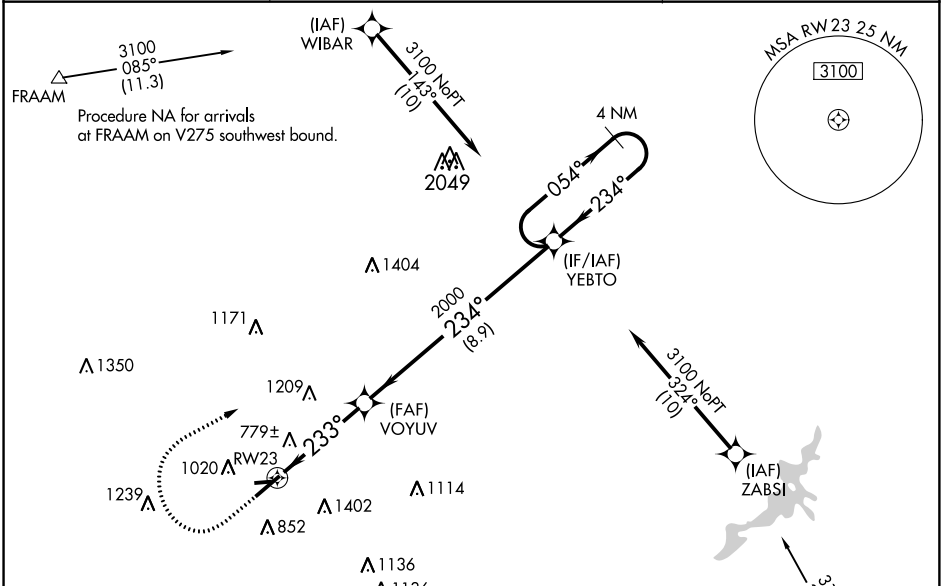
RNAV (GPS) RWY 23

MIDDLETOWN RGNL/HOOK FIELD (MWO)

⚠ Baro-VNAV NA when using Dayton-Wright altimeter setting. For uncompensated Baro-VNAV systems, LNAV/VNAV NA below -16°C (4°F) or above 40°C (104°F). DME/DME RNP-0.3 NA. When local altimeter setting not received, use Dayton-Wright Brothers altimeter setting; increase all DA 63 ft and all MDA 80 ft; increase LPV visibility all Cats ¼ mile, LNAV/VNAV visibility all Cats ¼ mile, LNAV visibility Cats C and D ¼ mile, and Circling visibility Cat C ¼ mile. Circling NA to Rwy 5 NA at night. Rwy 23 helicopter visibility reduction below ¾ SM NA. Circling Rwy 5 NA at night.

MISSED APPROACH: Climb to 1800 then climbing right turn to 3100 direct YEBTO and hold.

AWOS-3 120.025	COLUMBUS APP CON 118.85 269.275	UNICOM 123.0 (CTAF) 0
--------------------------	---	---------------------------------



CATEGORY	A	B	C	D
LPV DA		986-1 1/8	336 (400-1 1/8)	
LNAV/VNAV DA		1083-1 1/2	433 (500-1 1/2)	
LNAV MDA	1140-1	490 (500-1)	1140-1 3/8	490 (500-1 3/8)
CIRCLING	1380-1	730 (800-1)	1380-2 730 (800-2)	1840-3 1190 (1200-3)

EC-2, 03 JAN 2019 to 31 JAN 2019

EC-2, 03 JAN 2019 to 31 JAN 2019