

WAAS CH <b>82200</b> <b>W18A</b>	APP CRS <b>185°</b>	Rwy Idg TDZE Apt Elev	<b>6107</b> <b>592</b> <b>592</b>
--	------------------------	-----------------------------	---

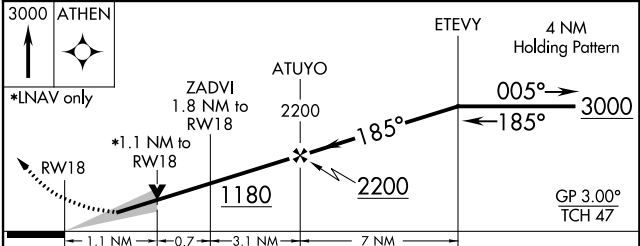
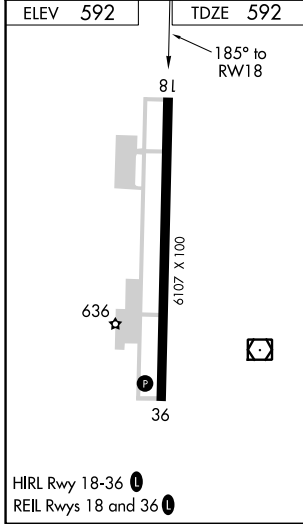
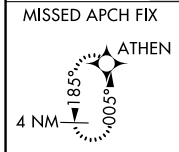
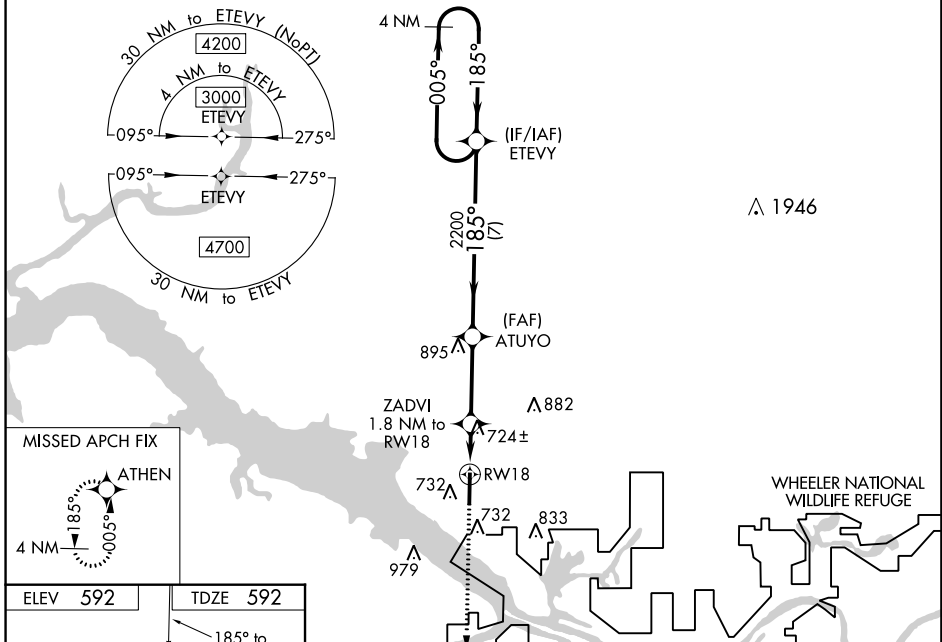
# RNAV (GPS) RWY 18

PRYOR FIELD RGNL (DCU)

**⚠** DME/DME RNP-0.3 NA. When local altimeter setting not received, use Huntsville Intl-Carl T. Jones Field altimeter setting; increase LPV DA to 817 and LNAV/VNAV DA to 920 and all visibilities 1/8 mile. Increase all MDA 40 feet and LNAV Cat C and D visibility 1/8 mile. VDP and Baro-VNAV NA when using Huntsville-Carl T. Jones Field altimeter setting. For uncompensated Baro-VNAV systems, LNAV/VNAV NA below -11°C (13°F) or above 54°C (130°F).

**MISSED APPROACH:**  
Climb to 3000 direct ATHEN and hold.

ASOS <b>118.375</b>	HUNTSVILLE APP CON* <b>118.05 239.0</b>	UNICOM <b>123.075 (CTAF) 0</b>
------------------------	--	-----------------------------------



CATEGORY	A	B	C	D
LPV DA		792-3/4	200 (200-3/4)	
LNAV/VNAV DA		895-1	303 (400-1)	
LNAV MDA	980-1	388 (400-1)	980-1 1/8	388 (400-1 1/8)
<b>C</b> CIRCLING	1040-1 448 (500-1)	1060-1 468 (500-1)	1340-2 1/4 748 (800-2 1/4)	1340-2 1/2 748 (800-2 1/2)

SE-4, 03 JAN 2019 to 31 JAN 2019

SE-4, 03 JAN 2019 to 31 JAN 2019