

| | | | |
|--|------------------------|-----------------------------|---|
| WAAS CH 57933 W17A | APP CRS 174° | Rwy Idg TDZE Apt Elev | 6502 867 874 |
|--|------------------------|-----------------------------|---|

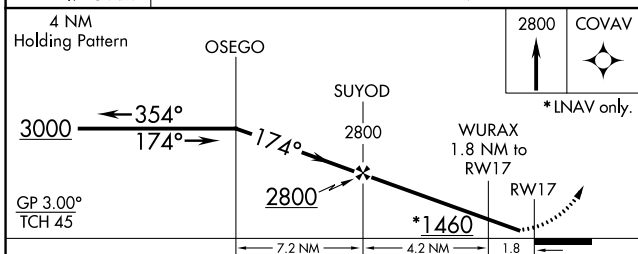
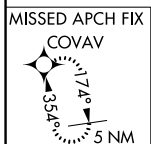
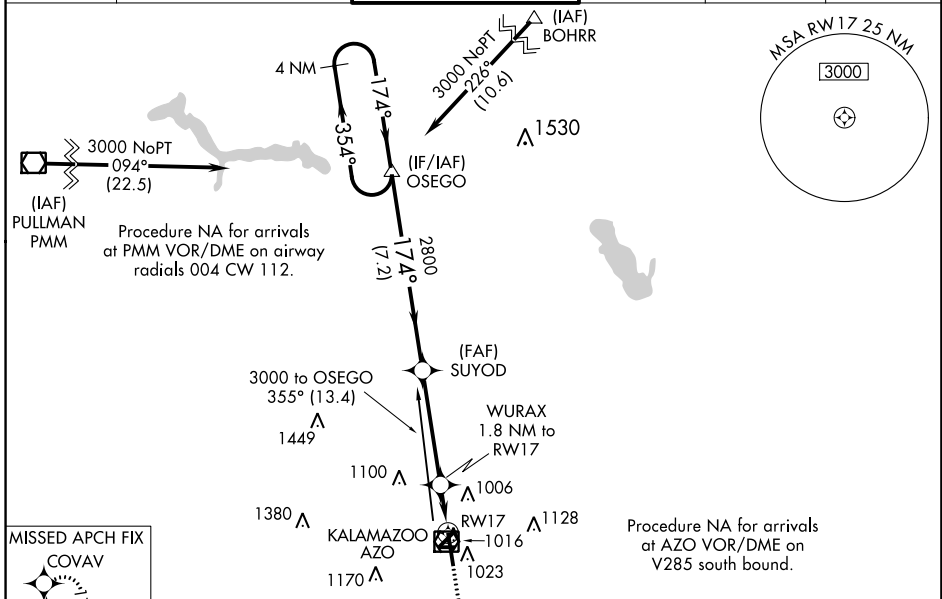
RNAV (GPS) RWY 17

KALAMAZOO/BATTLE CREEK INTL (AZO)

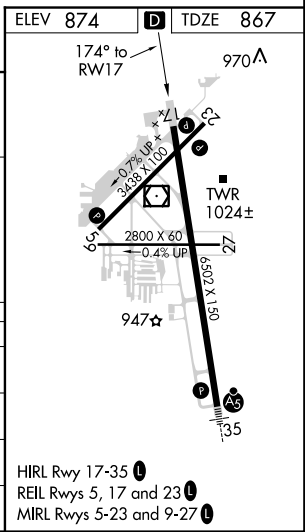
ASR Baro-VNAV NA when using Battle Creek altimeter setting. For uncompensated Baro-VNAV systems, LNAV/VNAV NA below -21°C (-5°F) or above 54°C (130°F). DME/DME RNP-0.3 NA. Helicopter visibility reduction below 3/4 SM not authorized. When local altimeter setting not received, use Battle Creek altimeter setting and increase all DA 44 feet and all MDA 60 feet. Increase LPV all Cats and LNAV Cat C/D visibility 1/8 mile. Increase LNAV/VNAV visibility all Cats 1/4 mile. Circling to Rwy 9/27 and 5/23 NA at night.

MISSED APPROACH: Climb to 2800 direct COVAV and hold.

| | | | | | |
|-----------------------|--|---|-------------------------|---------------------------|-------------------------|
| ATIS 127.25 | KALAMAZOO APP CON ★ 121.2 239.25 | KALAMAZOO TOWER ★ 118.3 (CTAF) 0 257.875 | GND CON 121.9 | CLNC DEL 121.75 | UNICOM 122.95 |
|-----------------------|--|---|-------------------------|---------------------------|-------------------------|



| CATEGORY | A | B | C | D |
|-------------------|--------|-------------|-----------------|-----------------|
| LPV DA | | 1156-1 | 289 (300-1) | |
| LNAV/VNAV DA | | 1185-1 | 318 (400-1) | |
| LNAV MDA | 1320-1 | 453 (500-1) | 1320-1 3/8 | 453 (500-1 3/8) |
| C CIRCLING | 1380-1 | 506 (600-1) | 1480-1 3/4 | 1480-2 |
| | | | 606 (700-1 3/4) | 606 (700-2) |



EC-1, 03 JAN 2019 to 31 JAN 2019

EC-1, 03 JAN 2019 to 31 JAN 2019