

VORTAC CMI	APP CRS	Rwy Idg	6501
110.0	207°	TDZE	750
Chan 37		Apt Elev	755

VOR RWY 22

UNIVERSITY OF ILLINOIS-WILLARD (CMI)

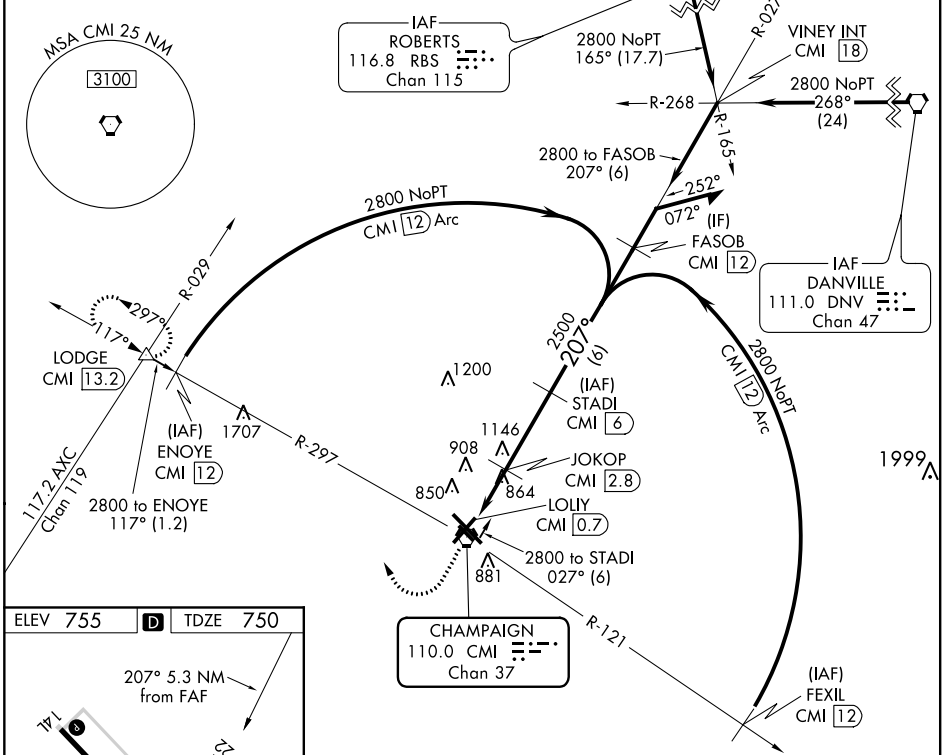
DME required.

Rwy 22 helicopter visibility reduction below 3/4 SM NA.

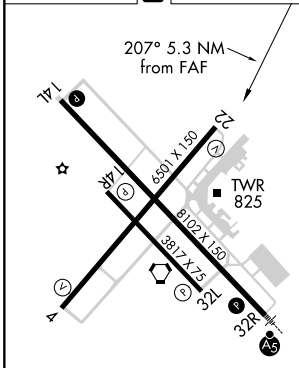
MISSED APPROACH: Climb to 2800 then right turn heading 340° and CMI VOR R-297 to LODGE INT/CMI 13.2 DME and hold.

ATIS	CHAMPAIGN APP CON *	CHAMPAIGN TOWER *	GND CON	CLNC DEL	UNICOM
124.85	121.35 285.65 (316°-135°) 132.85 290.225 (136°-315°)	120.4 (CTAF) 229.4	121.8	128.75	122.95

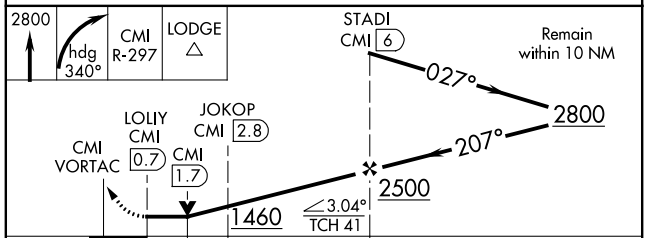
Procedure NA for arrivals at RBS VOR/DME on V191 northeast bound.



ELEV 755	D	TDZE 750
----------	---	----------



HIRL Rwy 14L-32R
MIRL Rwy 4-22
MIRL Rwy 14R-32L



CATEGORY	A	B	C	D
S-22	1120-1	370 (400-1)		1120-1 1/4 370 (400-1 1/4)
C CIRCLING	1240-1	485 (500-1)	1500-2 1/4 745 (800-2 1/4)	1500-2 1/2 745 (800-2 1/2)

EC-3, 03 JAN 2019 to 31 JAN 2019

EC-3, 03 JAN 2019 to 31 JAN 2019