

VORTAC CMI <b>110.0</b> Chan <b>37</b>	APP CRS <b>142°</b>	Rwy Idg TDZE Apt Elev <b>8102</b> <b>755</b> <b>755</b>
--	------------------------	--

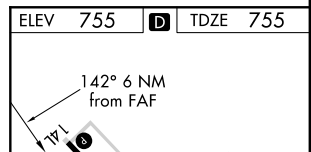
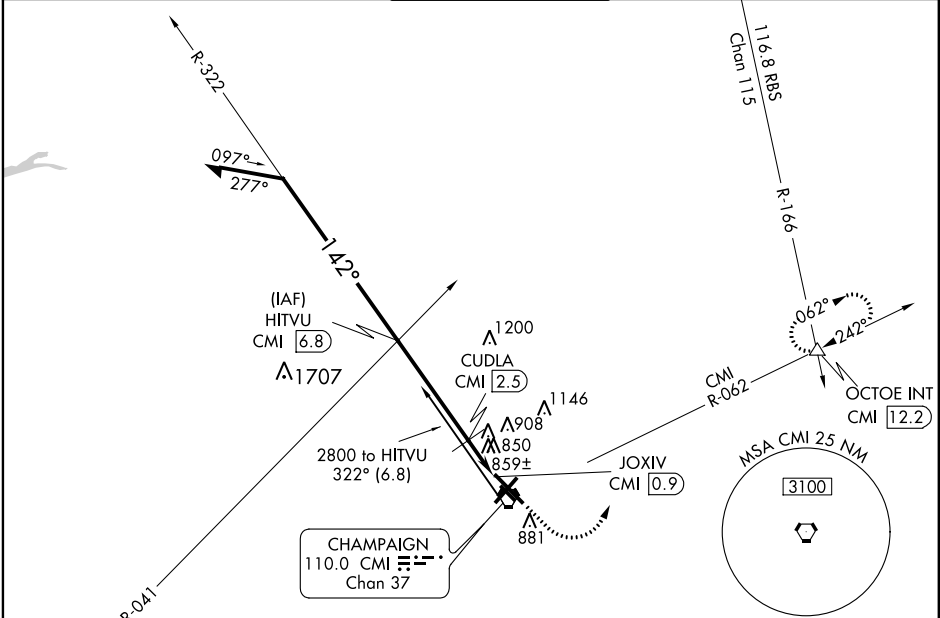
# VOR RWY 14L

UNIVERSITY OF ILLINOIS-WILLARD (CMI)

DME required.  
ASR

MISSED APPROACH: Climb to 2700 then left turn heading 020° and CMI R-062 to OCTOE INT/12.2 DME and hold.

ATIS <b>124.85</b>	CHAMPAIGN APP CON ★ <b>121.35 285.65</b> (316°-135°) <b>132.85 290.225</b> (136°-315°)	CHAMPAIGN TOWER ★ <b>120.4</b> (CTAF) <b>0 229.4</b>	GND CON <b>121.8</b>	CLNC DEL <b>128.75</b>	UNICOM <b>122.95</b>
-----------------------	--	---	-------------------------	---------------------------	-------------------------



Remain within 10 NM	HITVU CMI 6.8	2700	hdg 020°	CMI R-062	OCTOE
2800	322°	2700	142°	CUDLA CMI 2.5	JOXIV CMI 0.9
VGSI and descent angles not coincident. (VGSI Angle 3.00/TCH 48)	3.00° TCH 51	1300	4.4 NM	0.6	1 NM

CATEGORY	A	B	C	D
S-14L	1120-1	365 (400-1)		1120-1¼ 365 (400-1¼)
CIRCLING	1240-1	485 (500-1)	1500-2¼ 745 (800-2¼)	1500-2½ 745 (800-2½)

ELEV 755	TDZE 755
HIRL Rwy 14L-32R	MIRL Rwy 4-22
MIRL Rwy 14R-32L	

EC-3, 03 JAN 2019 to 31 JAN 2019

EC-3, 03 JAN 2019 to 31 JAN 2019