

WAAS CH <b>58311</b> <b>W04A</b>	APP CRS <b>041°</b>	Rwy Idg TDZE <b>751</b> Apt Elev <b>755</b>	<b>6501</b>
--	------------------------	---	-------------

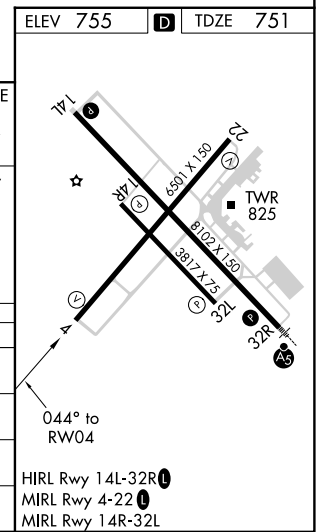
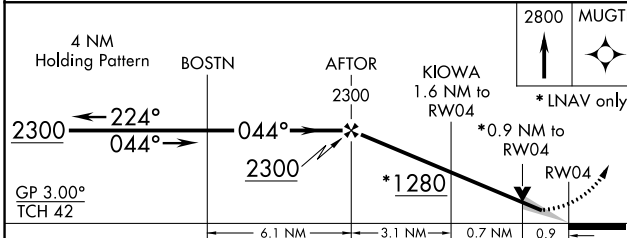
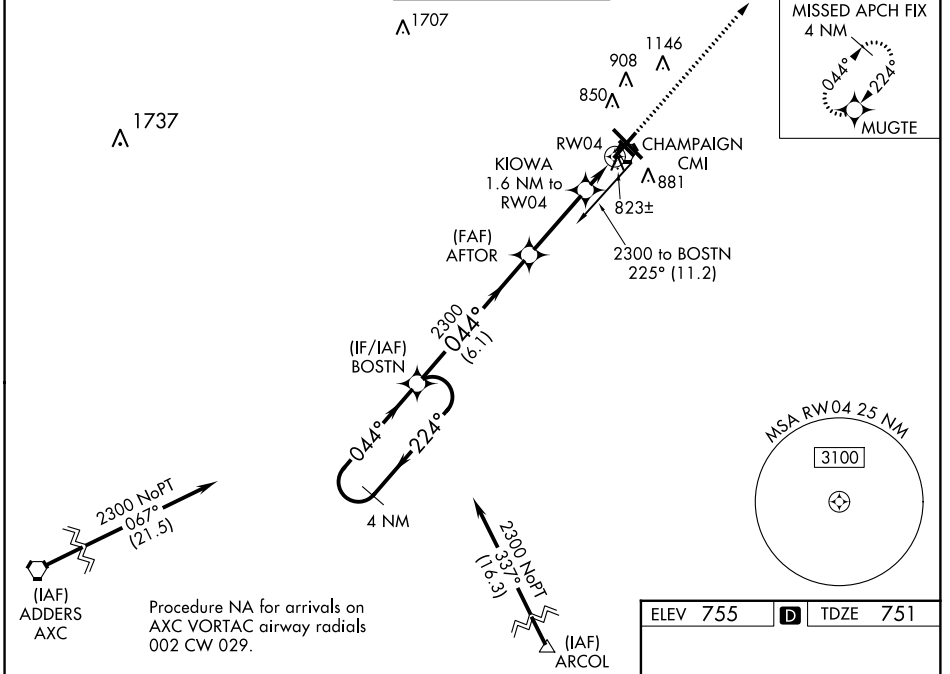
# RNAV (GPS) RWY 4

UNIVERSITY OF ILLINOIS-WILLARD (CMI)

**⚠** For uncompensated Baro-VNAV systems, LNAV/VNAV NA below -21°C (-5°F) or above 54°C (130°F). When local altimeter setting not received, use Rantoul altimeter setting and increase all DA 41 feet, and all MDA 60 feet. Increase LNAV Cat D visibility ¼ mile. DME/DME RNP-0.3 NA. VDP and Baro-VNAV NA when using Rantoul altimeter setting.

**MISSED APPROACH:** Climb to 2800 direct MUGTE and hold.

ATIS <b>124.85</b>	CHAMPAIGN APP CON ★ <b>121.35 285.65</b> (316°-135°) <b>132.85 290.225</b> (136°-315°)	CHAMPAIGN TOWER ★ <b>120.4</b> (CTAF) <b>0 229.4</b>	GND CON <b>121.8</b>	CLNC DEL <b>128.75</b>	UNICOM <b>122.95</b>
-----------------------	--	---	-------------------------	---------------------------	-------------------------



CATEGORY	A	B	C	D
LPV DA		1001-1	250 (300-1)	
LNAV/VNAV DA		1083-1¼	332 (400-1¼)	
LNAV MDA		1080-1	329 (400-1)	
<b>C</b> CIRCLING	1240-1	485 (500-1)	1500-2¼ 745 (800-2¼)	1500-2½ 745 (800-2½)

EC-3, 03 JAN 2019 to 31 JAN 2019

EC-3, 03 JAN 2019 to 31 JAN 2019