

WAAS CH <b>97619</b> <b>W22A</b>	APP CRS <b>224°</b>	Rwy Idg TDZE Apt Elev	<b>6501</b> <b>750</b> <b>755</b>
--	------------------------	-----------------------------	---

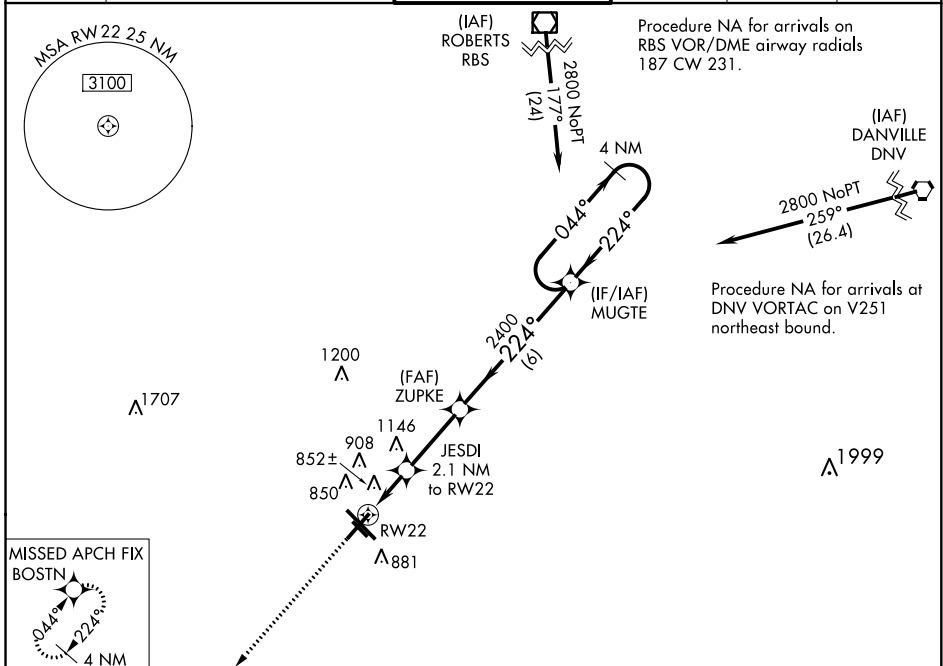
# RNAV (GPS) RWY 22

UNIVERSITY OF ILLINOIS-WILLARD (CMI)

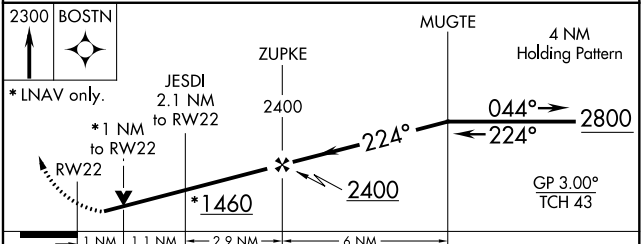
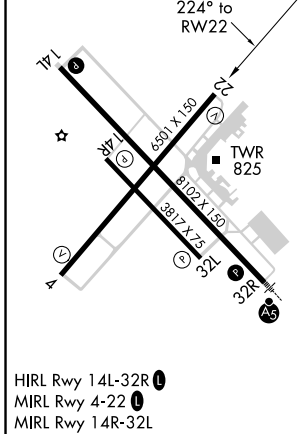
**ASR** For uncompensated Baro-VNAV systems, LNAV/VNAV NA below -21°C (-5°F) or above 54°C (130°F). DME/DME RNP-0.3 NA. When local altimeter setting not received, use Rantoul altimeter setting and increase all DA 41 feet and all MDA 60 feet; increase LNAV Cat C visibility ¼ mile. Baro-VNAV and VDP NA when using Rantoul altimeter setting.

**MISSED APPROACH:**  
Climb to 2300 direct BOSTN and hold.

ATIS <b>124.85</b>	CHAMPAIGN APP CON * <b>121.35 285.65</b> (316°-135°) <b>132.85 290.225</b> (136°-315°)	CHAMPAIGN TOWER * <b>120.4 (CTAF) 0 229.4</b>	GND CON <b>121.8</b>	CLNC DEL <b>128.75</b>	UNICOM <b>122.95</b>
-----------------------	--	--	-------------------------	---------------------------	-------------------------



ELEV 755	<b>D</b>	TDZE 750
----------	----------	----------



CATEGORY	A	B	C	D
LPV DA	1000-1		250 (300-1)	
LNAV/VNAV DA	1219-1¾ 469 (500-1¾)			
LNAV MDA	1120-1 370 (400-1)		1120-1¼ 370 (400-1¼)	
<b>C</b> CIRCLING	1240-1 485 (500-1)		1500-2¼ 745 (800-2¼) 1500-2½ 745 (800-2½)	

EC-3, 03 JAN 2019 to 31 JAN 2019

EC-3, 03 JAN 2019 to 31 JAN 2019