

VORTAC GLD 115.1 Chan 98	APP CRS 332°	Rwy Idg 5499 TDZE 3654 Apt Elev 3657
--	------------------------	---

VOR RWY 30

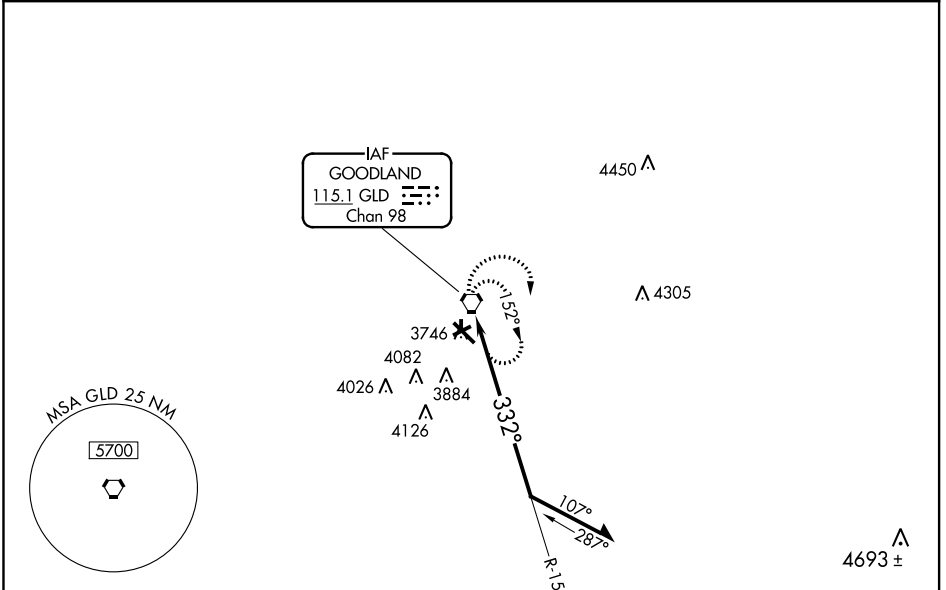
RENNER FIELD/GOODLAND MUNI (GLD)

⚠ Inoperative table does not apply to S-30 Cat C/D. Circling NA south of Rwy 5 and 30. When local altimeter setting not received, use Burlington, CO altimeter setting and increase all MDA 160 feet; increase S-30 Cat C/D visibilities to 2 miles, Circling Cat C visibility to 2 miles and Circling Cat D visibility to 2 1/4 miles. Circling Rwy 5, 23 NA at night. Circling NA to Rwys 17 and 35.

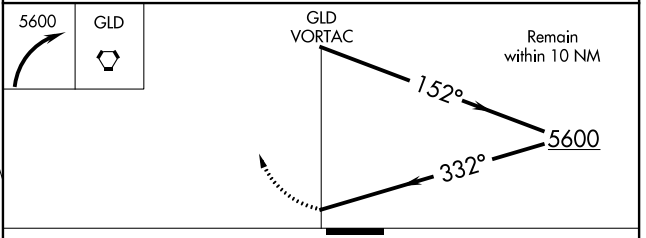
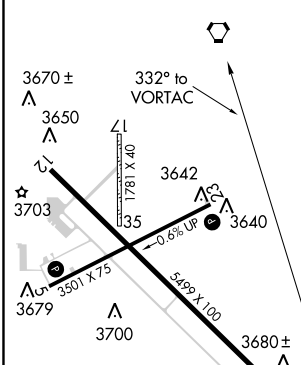


MISSED APPROACH: Climbing right turn to 5600 in GLD VORTAC holding pattern.

ASOS 121.025	DENVER CENTER 132.7 226.675	UNICOM 122.95 (CTAF)
------------------------	---------------------------------------	--------------------------------



ELEV 3657	TDZE 3654
-----------	-----------



CATEGORY	A	B	C	D
S-30	4200-1/2 546 (600-1/2)		4200-1 5/8 546 (600-1 5/8)	
CIRCLING	4200-1 543 (600-1)		4200-1 5/8 543 (600-1 5/8)	4220-2 563 (600-2)

NC-2, 03 JAN 2019 to 31 JAN 2019

NC-2, 03 JAN 2019 to 31 JAN 2019