

WAAS CH 48920 W30A	APP CRS 305°	Rwy Idg TDZE Apt Elev	5499 3654 3657
--	------------------------	-----------------------------	---

RNAV (GPS) RWY 30

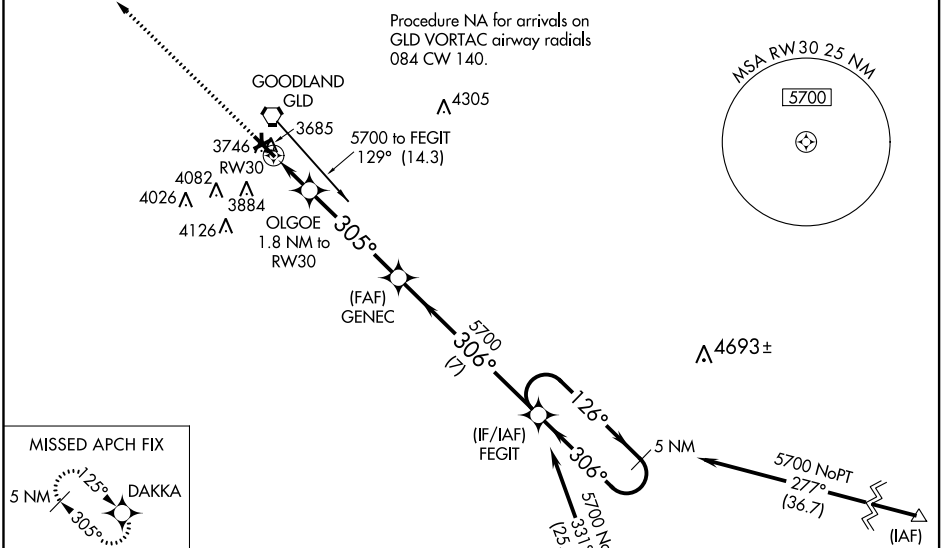
RENNER FIELD/GOODLAND MUNI (GLD)

⚠ Baro-VNAV NA when using Burlington, CO altimeter setting. For uncompensated Baro-VNAV systems, LNAV/VNAV NA below -22°C (7°F) or above 54°C (130°F) Circling NA south of Rwy 5-30. DME/DME RNP-0.3 NA. VDP NA with Burlington, CO altimeter setting. When local altimeter setting not received, use Burlington, CO altimeter setting and increase all DA 144 feet and all MDA 160 feet. Increase LPV all Cats visibilities to 5/8 mile, LNAV/VNAV all Cats visibilities to 7/8 mile, LNAV Cat C/D visibilities to 1 mile, Circling Cat C visibility to 1 3/4, and Cat D visibility to 2 1/4 mile. Circling Rwy 5, 23 NA at night. Circling NA to Rwy 17 and 35.

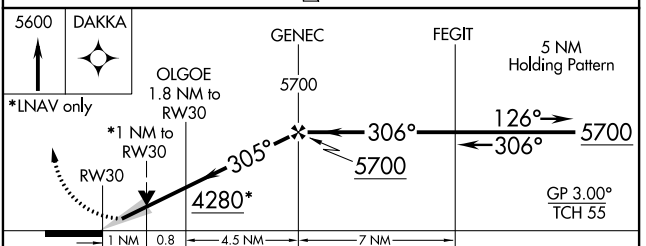
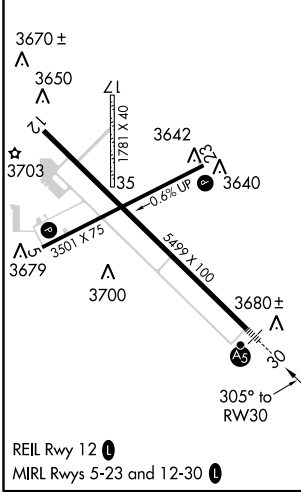


MISSED APPROACH:
Climb to 5600 direct DAKKA and hold.

ASOS 121.025	DENVER CENTER 132.7 226.675	UNICOM 122.95 (CTAF) 0
------------------------	---------------------------------------	----------------------------------



ELEV 3657	TDZE 3654
------------------	------------------



CATEGORY	A	B	C	D
LPV DA		3854-1/2	200 (200-1/2)	
LNAV/VNAV DA		3904-1/2	250 (300-1/2)	
LNAV MDA	4020-1/2	366 (400-1/2)	4020-5/8	366 (400-5/8)
CIRCLING	4080-1 423 (500-1)	4120-1 463 (500-1)	4120-1 1/2 463 (500-1 1/2)	4220-2 563 (600-2)

NC-2, 03 JAN 2019 to 31 JAN 2019

NC-2, 03 JAN 2019 to 31 JAN 2019