

APP CRS	Rwy Idg	3501
234°	TDZE	3655
	Apt Elev	3656

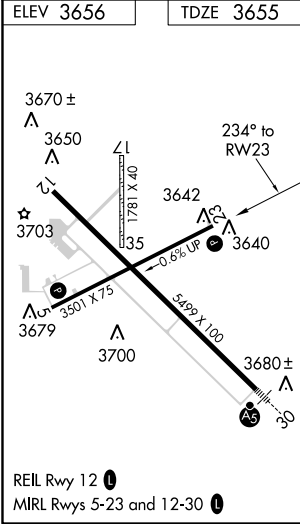
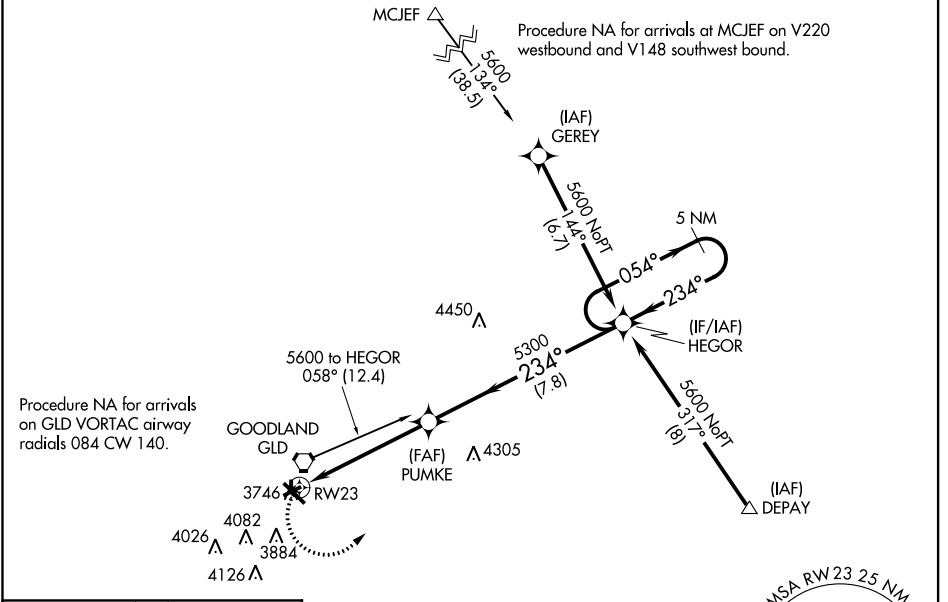
RNAV (GPS) RWY 23

RENNER FIELD/GOODLAND MUNI (GLD)

▼ Circling NA south of Rwy 5-30. DME/DME RNP-0.3 NA. Straight-in Rwy 23 NA at night. VDP NA with Burlington, CO altimeter setting. When local altimeter setting not received, use Burlington, CO altimeter setting and increase all MDA 160 feet. Increase LNAV and Circling Cat C visibility to 1¼ mile. Rwy 23 helicopter visibility reduction below 1 SM NA. Circling Rwy 5, 23 NA at night. Circling NA to Rwy 17 and 35.

▲ MISSED APPROACH: Climbing left turn to 5600 direct HEGOR and hold.

ASOS 121.025	DENVER CENTER 132.7 226.675	UNICOM 122.95 (CTAF) 0
------------------------	---------------------------------------	----------------------------------



CATEGORY	A	B	C	D
LNAV MDA	4060-1	405 (500-1)	4060-1¼ 405 (500-1¼)	NA
CIRCLING	4080-1 424 (500-1)	4120-1 464 (500-1)	4120-1½ 464 (500-1½)	NA

NC-2, 03 JAN 2019 to 31 JAN 2019

NC-2, 03 JAN 2019 to 31 JAN 2019