

LOC/DME I-GLD 108.9 Chan 26	APP CRS 305°	Rwy Idg TDZE Apt Elev	5499 3654 3657
--	------------------------	-----------------------------	---

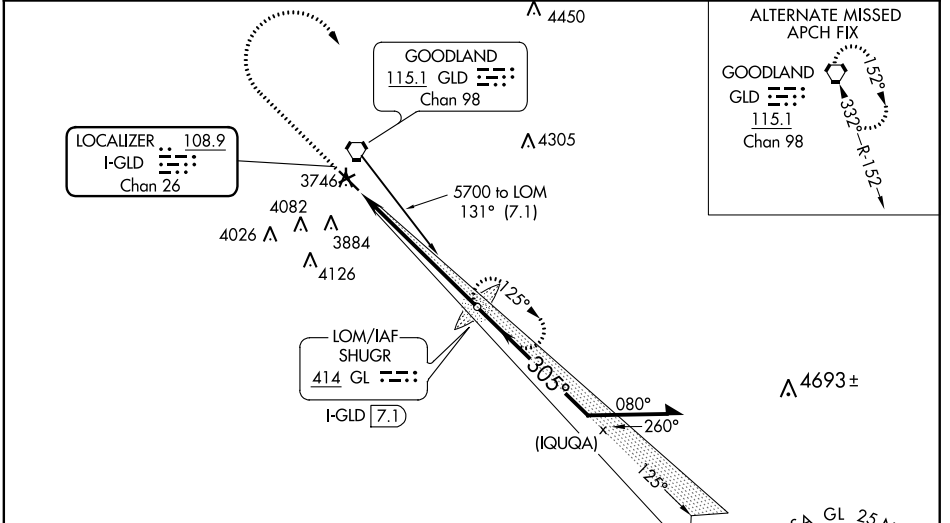
ILS or LOC RWY 30
RENNER FIELD/GOODLAND MUNI (GLD)

⚠ Circling NA south of runways 5-30. ADF required. VDP NA with Burlington, CO altimeter setting. When local altimeter setting not received, use Burlington, CO altimeter setting and increase all DA 144 feet and all MDA 160 feet. Increase S-ILS 30 all Cats visibility to 3/8 mile, S-LOC 30 Cat C/D visibility to 1 3/8 mile, Circling Cat C visibility to 1 3/4 mile, and Cat D to 2 1/4 mile. Circling NA to Rwy 17 and 35. Circling Rwy 5, 23 NA at night.

MALSR

MISSED APPROACH: Climb to 4500 then climbing right turn to 5700 direct SHUGR LOM/I-GLD 7.1 DME and hold.

ASOS 121.025	DENVER CENTER 132.7 226.675	UNICOM 122.95 (CTAF)
------------------------	---------------------------------------	--------------------------------



ALTERNATE MISSED APCH FIX

GOODLAND
GLD 115.1
Chan 98

ADF REQUIRED

ELEV 3657	TDZE 3654
-----------	-----------

Knots	60	90	120	150	180
Min:Sec	6:00	4:00	3:00	2:24	2:00

4500	5700	GL	Remain within 10 NM
------	------	----	---------------------

*LOC only

*I-GLD 2.3

I-GLD 1.2

SHUGR LOM I-GLD 7.1

5643

125°

305°

5700

5700

GS 3.00° TCH 55

1.2 NM

4.8 NM

CATEGORY	A	B	C	D
S-ILS-30	3854-1/2		200 (200-1/2)	
S-LOC-30	4100-1/2	446 (500-1/2)	4100-7/8	446 (500-7/8)
CIRCLING	4100-1 443 (500-1)	4120-1 463 (500-1)	4120-1 1/2 463 (500-1 1/2)	4220-2 563 (600-2)

NC-2, 03 JAN 2019 to 31 JAN 2019

NC-2, 03 JAN 2019 to 31 JAN 2019