

ATLANTIC CITY, NEW JERSEY

HI-ILS or LOC RWY 13

LOC/DME I-PVO 109.1 Chan 28	APCH CRS 128°	Rwy Idg 10,000 TDZE 75 Arprt Elev 75
---	-------------------------	--

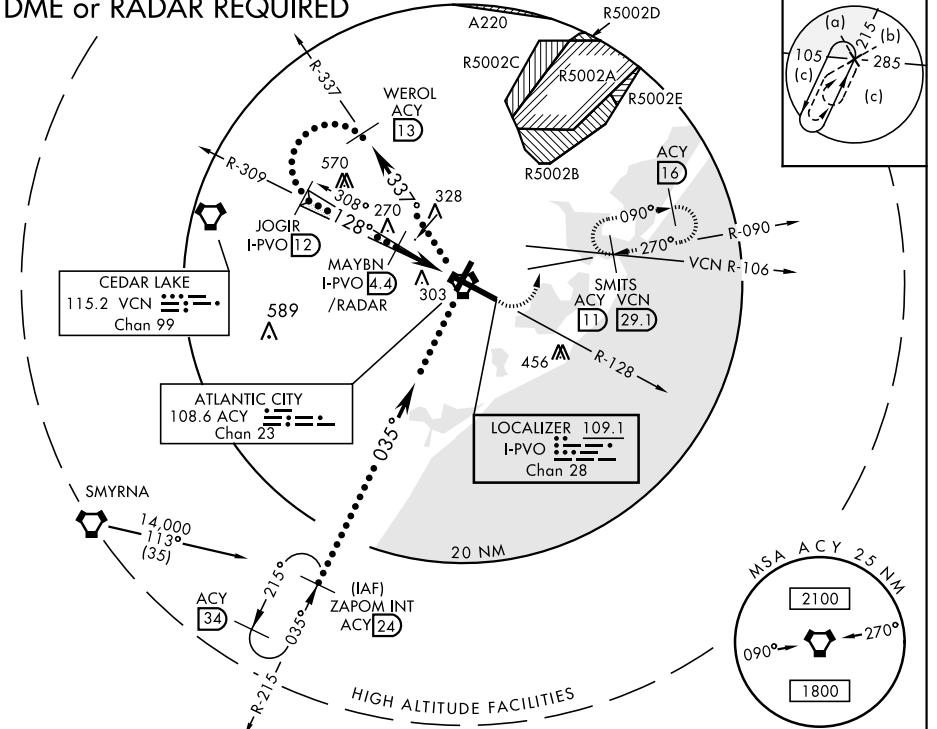
JAL-669 [USAF]

ATLANTIC CITY INTL (KACY)

<p>▼ * When ALS inop, increase RVR to 40 and vis to ¾ mile.</p> <p>▲ ** When ALS inop, increase RVR to 50 and vis to 1 mile.</p>	<p>MALSR A5</p>	<p>MISSED APPROACH: Climb to 600 then climbing left turn to 2000 via ACY R-090 to SMITS INT/ACY 11 DME and hold; or when directed by ATC, climb to 600 then climbing left turn to 2000 via heading 076° and VCN R-106 to SMITS INT/VCN 29.1 DME and hold E, RT, hdg 286° inbound.</p>
--	---------------------	---

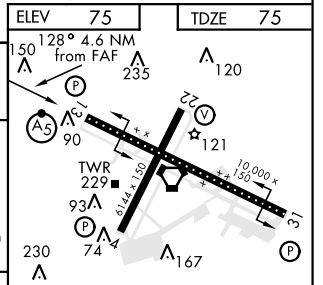
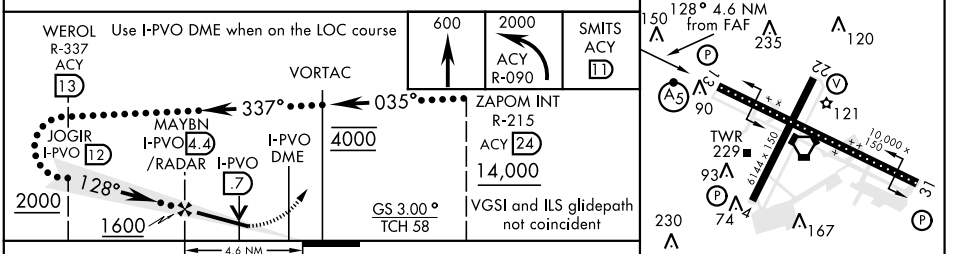
ATIS 125.725 316.15	ATLANTIC CITY APP CON 130°-309° 124.6 327.125 310°-129° 134.25 292.2	ATLANTIC CITY TOWER 120.3 239.0	GND CON 121.9 284.6	CLNC DEL 127.85 353.775	ASR
-------------------------------	--	---	-------------------------------	-----------------------------------	-----

DME or RADAR REQUIRED



NE-2, 03 JAN 2019 to 31 JAN 2019

EMERG SAFE ALT 100 NM 4200



39°27'N-74°35'W

ATLANTIC CITY INTL (KACY)

Amdt 4C 04FEB16

HI-ILS or LOC RWY 13