

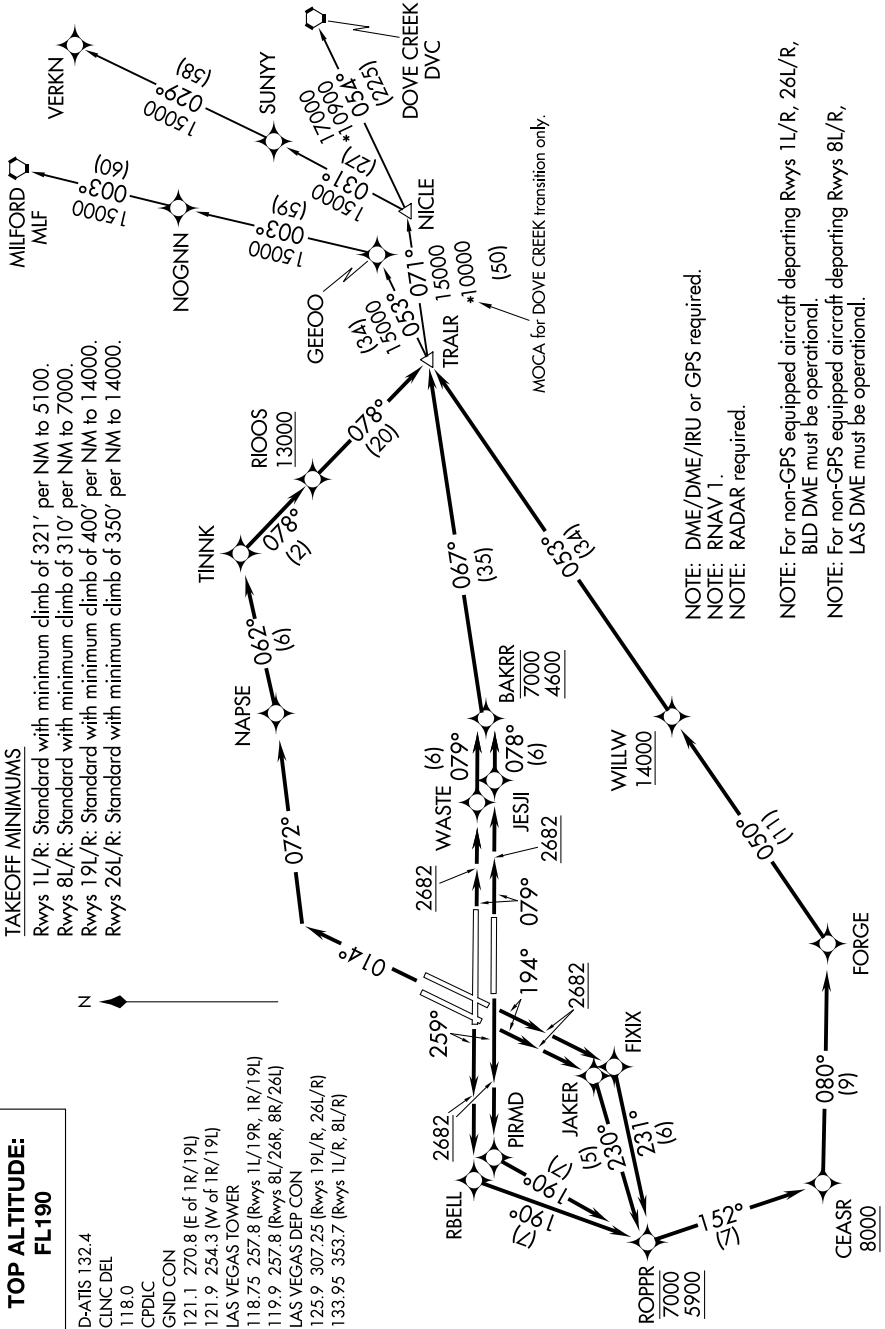
SW-4, 03 JAN 2019 to 31 JAN 2019

TOP ALTITUDE:
FL190

- D-ATIS 132.4
- CLINC DEL 118.0
- CPDLC 118.0
- GND CON 121.1 270.8 (E of 1R/19L)
- 121.9 254.3 (W of 1R/19L)
- LAS VEGAS TOWER 118.75 257.8 (Rwys 1L/19R, 1R/19L)
- 119.9 257.8 (Rwys 8L/26R, 8R/26L)
- LAS VEGAS DEP CON 125.9 307.25 (Rwys 19L/R, 26L/R)
- 133.95 353.7 (Rwys 1L/R, 8L/R)

TAKEOFF MINIMUMS

- Rwys 1L/R: Standard with minimum climb of 321' per NM to 5100.
- Rwys 8L/R: Standard with minimum climb of 310' per NM to 7000.
- Rwys 19L/R: Standard with minimum climb of 400' per NM to 14000.
- Rwys 26L/R: Standard with minimum climb of 350' per NM to 14000.



NOTE: DME/DME/IRU or GPS required.

NOTE: RNAV 1

NOTE: RADAR required.

NOTE: For non-GPS equipped aircraft departing Rwys 1L/R, 26L/R, BLD DME must be operational.

NOTE: For non-GPS equipped aircraft departing Rwys 8L/R, LAS DME must be operational.

(NARRATIVE ON FOLLOWING PAGE)

NOTE: Chart not to scale.

SW-4, 03 JAN 2019 to 31 JAN 2019