

# SHEAD ONE DEPARTURE (RNAV)

AL-662 (FAA)

MC CARRAN INTL (LAS)  
LAS VEGAS, NEVADA

SW-4, 03 JAN 2019 to 31 JAN 2019

**TOP ALTITUDE:**  
**FL190**

### TAKEOFF MINIMUMS

- Rwys 1L/R: 1100-3 with minimum climb of 500' per NM to 6000.
- Rwys 8L/R: Standard with minimum climb of 400' per NM to 8000.
- Rwys 19L/R: Standard with minimum climb of 483' per NM to 9000.
- Rwys 26L/R: Standard with minimum climb of 470' per NM to 9000.

NOTE: DME/DME/IRU or GPS required.

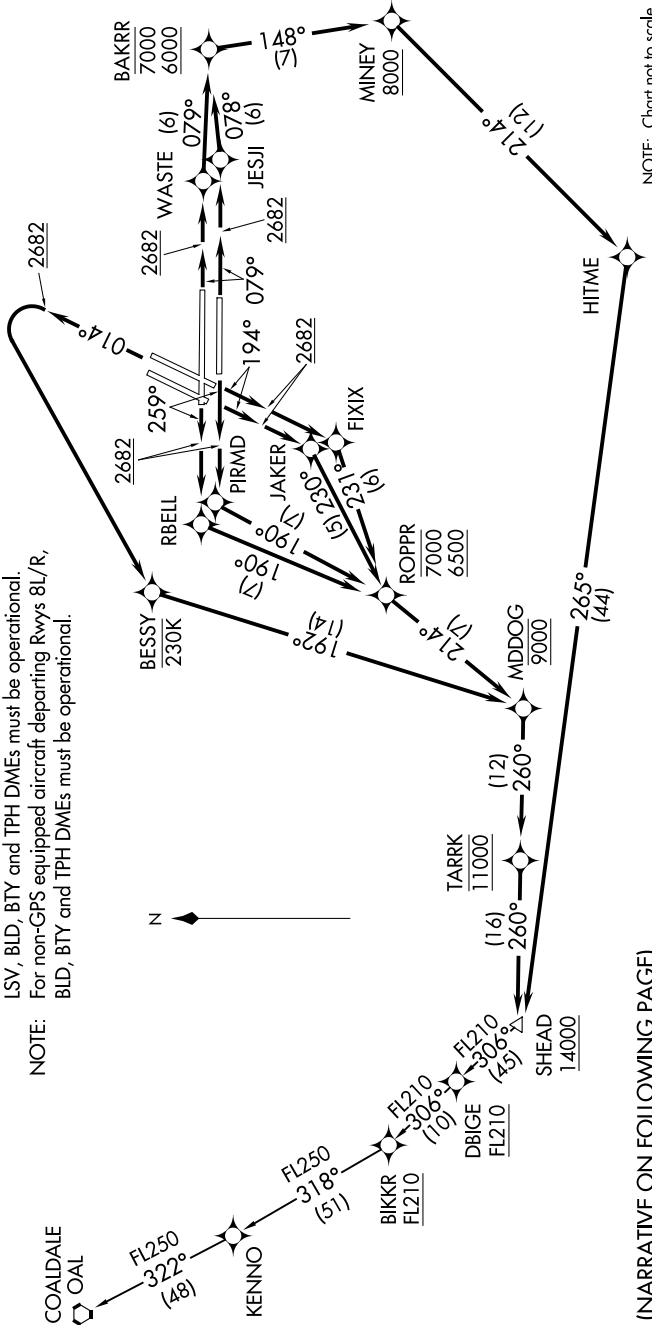
NOTE: RNAV 1.

NOTE: RADAR required.

NOTE: For non-GPS equipped aircraft departing Rwys 1L/R, 19L/R, 26L/R, LSV, BLD, BTY and TPH DMEs must be operational.

NOTE: For non-GPS equipped aircraft departing Rwys 8L/R, BLD, BTY and TPH DMEs must be operational.

- D-ATIS 132.4
- CUNCD EL 118.0
- CPDLC 118.0
- GND CON 121.1 270.8 (E of 1R/19L)
- 121.9 254.3 (W of 1R/19L)
- LAS VEGAS TOWER 118.75 257.8 (Rwys 1L/19R, 1R/19L)
- 119.9 257.8 (Rwys 8L/26R, 8R/26L)
- LAS VEGAS DEP CON 125.9 307.25



NOTE: Chart not to scale.

(NARRATIVE ON FOLLOWING PAGE)

SW-4, 03 JAN 2019 to 31 JAN 2019

# SHEAD ONE DEPARTURE (RNAV)