

LOC/DME H-LAS 110.3 Chan 40	APP CRS 259°	Rwy Idg 26R 12757 TDZE 2067 Apt Elev 2181	Rwy Idg 26L 10525 TDZE 2069 Apt Elev 2181
--	------------------------	--	--

ILS or LOC RWY 26R

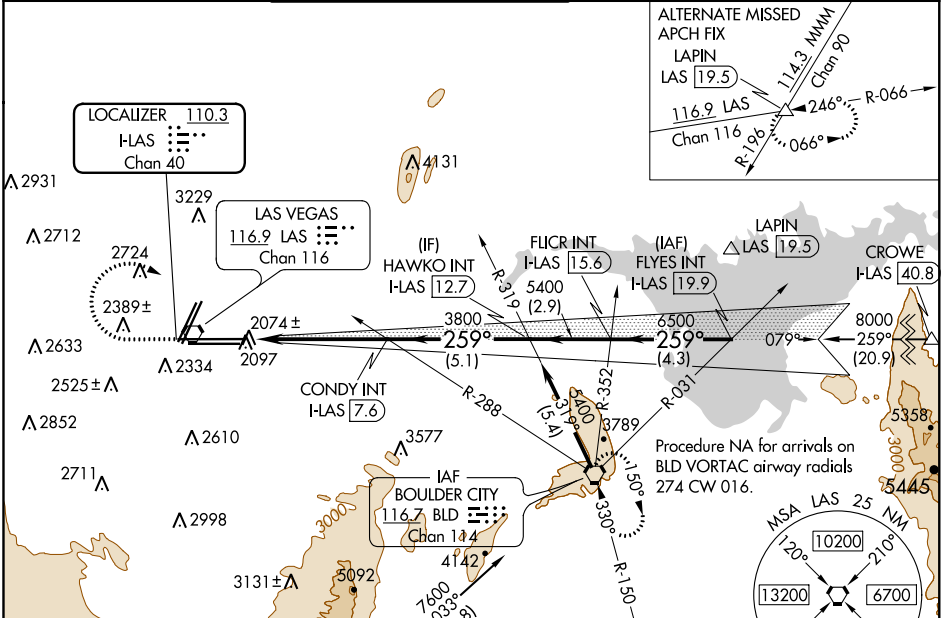
MC CARRAN INTL (LAS)

▽ Inop table does not apply to Sidestep Rwy 26L.
△ For inop ALS, increase S-ILS all Cats visibility to 1 SM, and S-LOC 26R Cat D and E visibility to 1/8 SM.

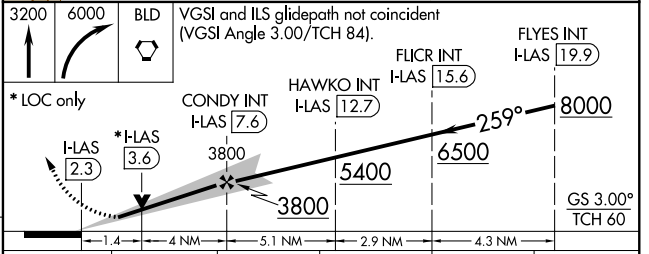
MALS Rwy 26R MALS F Rwy 26L

MISSED APPROACH: Climb to 3200 then climbing right turn to 6000 direct BLD VORTAC and hold, continue climb-in-hold to 6000.

D-ATIS 132.4	LAS VEGAS APP CON 125.025 379.15 (West) 125.6 282.2 (East)	LAS VEGAS TOWER 118.75 257.8 (Rwy 1L/19R, 1R/19L) 119.9 257.8 (Rwy 8L/26R, 8R/26L)	GND CON 121.1 270.8 E of 1R/19L 121.9 254.3 W of 1R/19L	CLNC DEL 118.0	CPDLC
------------------------	--	--	---	--------------------------	-------



ELEV 2181	D TDZE 26R 2067 TDZE 26L 2069
-----------	---



REIL Rws 1R, 8R, 19L and 19R	MIRL Rwy 1R-19L	HIRL Rws 1L-19R, 8L-26R and 8R-26L
FAF to MAP 5.3 NM		
Knots	60	90 120 150 180
Min:Sec	5:18	3:32 2:39 2:07 1:46

CATEGORY	A	B	C	D	E
S-ILS 26R	2359-3/4 292 (200-3/4)				
S-LOC 26R	2560-3/4	493 (400-3/4)	2560-1 1/8 493 (400-1 1/8)		
SIDESTEP RWY 26L	2560-1	491 (400-1)	2560-1 1/2 491 (400-1 1/2)	2560-2 491 (400-2)	
C CIRCLING	3020-1 1/4 839 (900-1 1/4)	3040-1 1/4 859 (900-1 1/4)	3100-2 3/4 919 (1000-2 3/4)	3540-3 1359 (1400-3)	

SW-4, 03 JAN 2019 to 31 JAN 2019

SW-4, 03 JAN 2019 to 31 JAN 2019