

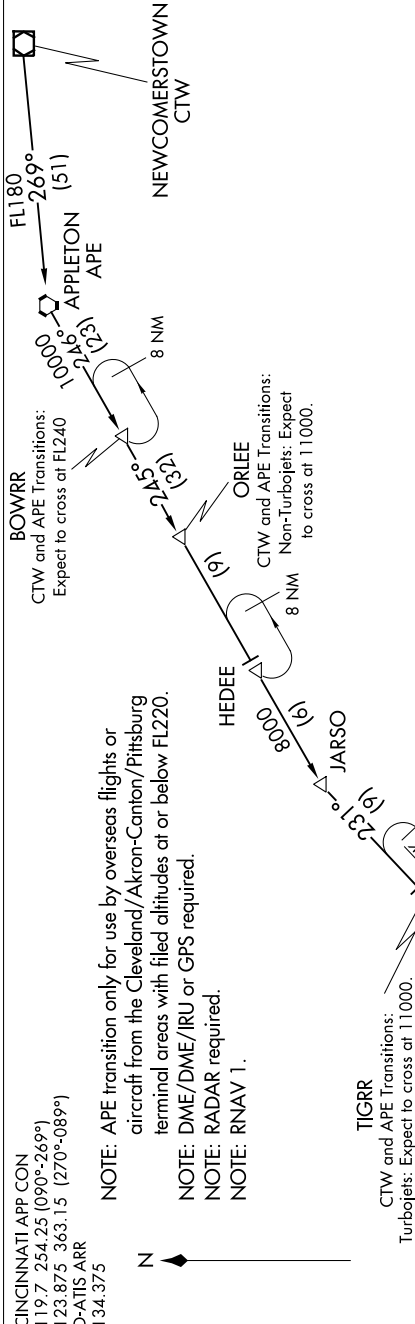
SE-1, 03 JAN 2019 to 31 JAN 2019

CINCINNATI APP CON  
119.7 254.25 (090°-269°)  
123.875 363.15 (270°-089°)  
D-ATIS ARR  
134.375

NOTE: APE transition only for use by overseas flights or aircraft from the Cleveland/Akron-Canton/Pittsburg terminal areas with filed altitudes at or below FL220.  
NOTE: DME/DME/IRU or GPS required.  
NOTE: RADAR required.  
NOTE: RNAV 1.



TIGRR  
CTW and APE Transitions:  
Turbobojts: Expect to cross at 11000.  
Non-Turbobojts: Expect to cross at 9000.



APPLETON TRANSITION (APE.TIGRR2):  
NEWCOMERSTOWN TRANSITION (CTW.TIGRR2):

From over TIGRR on track 231° to CHARZ, thence as depicted to HAVLO.

Landing South, East, West: Expect radar vectors to final approach course prior to BACAS.

Landing North: Expect radar vectors to final approach course prior to HAVLO.

LOST COMMUNICATIONS:

At HAVLO fly heading 270°, maintain 6000, intercept and execute ILS RWY 36R approach. If unable, proceed direct to CVG VORTAC and hold, NE, RT, 239° inbound, maintain 6000.

At CHARZ fly heading 270°, maintain 6000, intercept and execute ILS RWY 18L approach. If unable, proceed direct to CVG VORTAC and hold, NE, RT, 239° inbound, maintain 6000.

NOTE: Chart not to scale.

SE-1, 03 JAN 2019 to 31 JAN 2019