

WAAS CH 65709 W09A	APP CRS 094°	Rwy Idg 11640 TDZE 883 Apt Elev 896
--	------------------------	--

RNAV (GPS) Y RWY 9

CINCINNATI/NORTHERN KENTUCKY INTL (CVG)

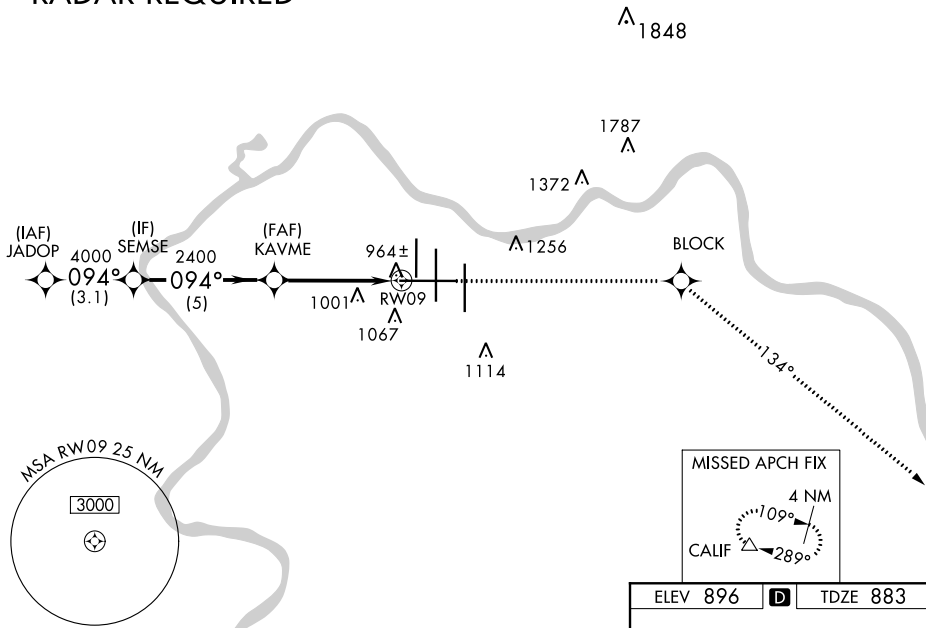
▼ For inoperative MALSR, increase LNAV Cat D visibility to RVR 6000.
For uncompensated Baro-VNAV systems, LNAV/VNAV NA below -16° C (4° F) or above 47° C (116° F).
DME/DME RNP-0.3 NA.



MISSED APPROACH: Climb to 3000 direct BLOCK and on 134° track to CALIF and hold.

D-ATIS ARR 134.375 DEP 135.3	CINCINNATI APP CON 119.7 254.25 (090°-269°) 123.875 363.15 (270°-089°)	CINCINNATI TOWER 118.975 360.85 (RWY 18L/36R) 118.3 (RWYS 18C/36C, 09/27) 133.325 (RWY 18R/36L)	GND CON 121.7	CLNC DEL 127.175
---	--	--	-------------------------	----------------------------

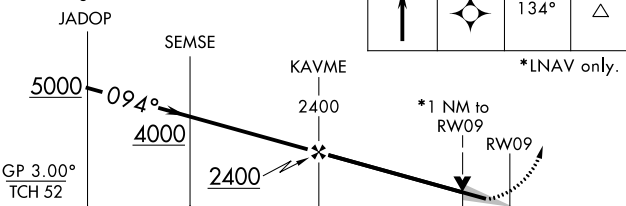
RADAR REQUIRED



SE-1, 03 JAN 2019 to 31 JAN 2019

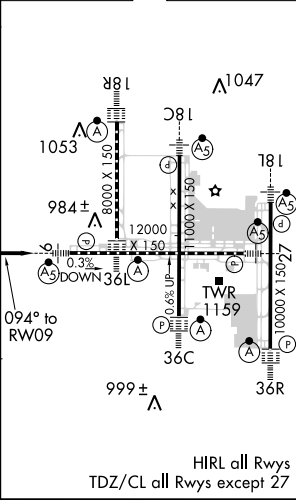
SE-1, 03 JAN 2019 to 31 JAN 2019

VGSI and RNAV glidepath not coincident (VGSI Angle 3.00/TCH 70).



CATEGORY	A	B	C	D
LPV DA		1083/18	200 (200-½)	
LNAV/VNAV DA		1297/50	414 (500-1)	
LNAV MDA	1260/24	377 (400-½)		1260/50 377 (400-1)
CIRCLING	1460-1	564 (600-1)	1460-1½ 564 (600-1½)	1560-2 664 (700-2)

ELEV 896 **D** TDZE 883



HIRL all Rwys
TDZ/CL all Rwys except 27