

WAAS CH 97609 W36B	APP CRS 004°	Rwy Idg 11000 TDZE 851 Apt Elev 896
--	------------------------	--

RNAV (GPS) Y RWY 36C

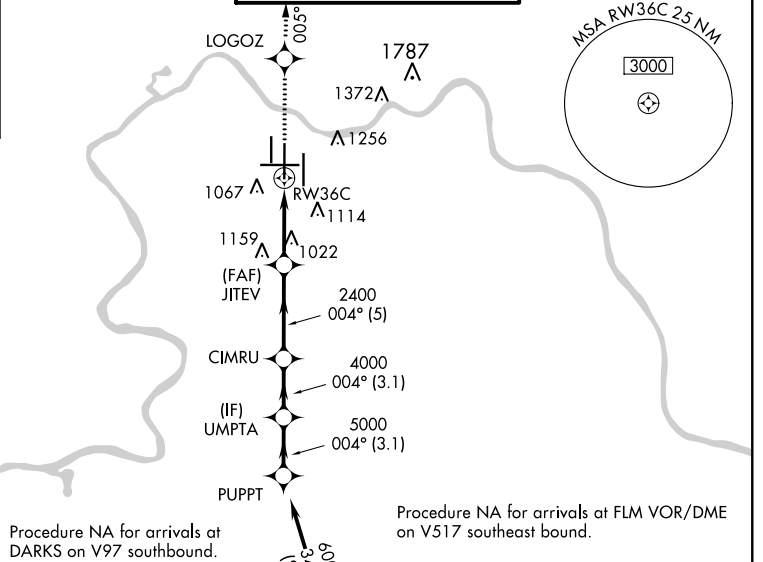
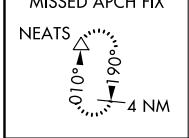
CINCINNATI/NORTHERN KENTUCKY INTL (CVG)

▽ For uncompensated Baro-VNAV systems, LNAV/VNAV NA below -16°C (4°F) or above 47°C (116°F). DME/DME RNP-0.3 NA. Simultaneous approach authorized with Rwy 36L/R. LNAV procedure NA during simultaneous operations. Use of FD or AP providing RNAV track guidance required during simultaneous operations.



MISSED APPROACH: Climb to 3000 direct LOGOZ and on 005° track to NEATS and hold.

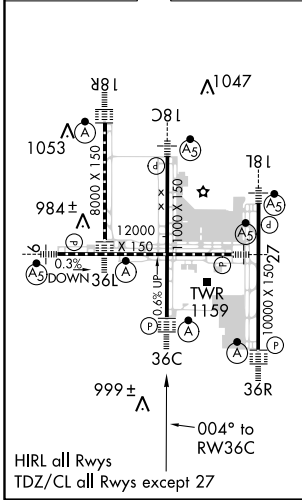
D-ATIS ARR 134.375 DEP 135.3	CINCINNATI APP CON 119.7 254.25 (090°-269°) 123.875 363.15 (270°-089°)	CINCINNATI TOWER 118.975 360.85 (RWY 18L/36R) 118.3 (RWYS 18C/36C, 09/27) 133.325 (RWY 18R/36L)	GND CON 121.7	CLNC DEL 127.175
---	--	---	-------------------------	----------------------------



Procedure NA for arrivals at DARKS on V97 southbound.

Procedure NA for arrivals at FLM VOR/DME on V517 southeast bound.

ELEV 896	D	TDZE 851
-----------------	----------	-----------------



3000	LOGOZ	NEATS	VGSI and RNAV glidepath not coincident (VGSI Angle 3.00/TCH 77).	Procedure Turn NA
↑	✦	△		
	tr 005°			
*LNAV only.				
		JITEV 2400	CIMRU 4000	UMPTA 5000
				PUPPT 6000
				GP 3.00° TCH 52
	1.5 NM	3.2 NM	5 NM	3.1 NM
				3.1 NM
CATEGORY	A	B	C	D
LPV DA		1051/18	200 (200-1/2)	
LNAV/VNAV DA		1347/60	496 (500-1/4)	
LNAV MDA	1400/24	549 (600-1/2)	1400/50 549 (600-1)	1400/60 549 (600-1 1/4)
CIRCLING	1460-1	564 (600-1)	1460-1 1/2 564 (600-1 1/2)	1560-2 664 (700-2)

SE-1, 03 JAN 2019 to 31 JAN 2019

SE-1, 03 JAN 2019 to 31 JAN 2019